



Original Research Article

Cephalometric norms in coastal Odisha children

Jitendra Kumar Dash¹, Jayant Kumar Dash¹, Surya Kanta Das²,
Prasanna Kumar Sahoo¹, Mitali Mishra^{2,*}

¹Dept. of Pedodontics, SCB Dental College, Cuttack, Odisha, India

²Dept. of Orthodontics & Dentofacial Orthopedics, SCB Dental College, Cuttack, Odisha, India



ARTICLE INFO

Article history:

Received 25-07-2022

Accepted 19-08-2022

Available online 13-09-2022

Keywords:

Cephalometric norms

Coastal Odisha

Caucasian

ABSTRACT

Objective: To establish cephalometric norms (skeletal and dental) for Coastal Odisha population of India and to compare it with other Caucasian norms.

Materials and Methods: The Lateral cephalograms of 60 children of 9-16 year age group with normal occlusion and pleasant profile were taken and cephalometric norms were established using Down's, Steiner's, Tweeds, Wits, Bjork, Jarabak, McNamara, Ricketts and Schwarz analysis.

Results and Conclusion: The study concluded that Overall dimension of cranial base, maxilla and mandible are smaller in Coastal Odia children than that of Caucasians. Odia children are having more proclined upper and lower incisors and smaller upper and lower dental height in anterior and posterior region, steeper mandibular plane angle, greater upper and lower lip prominence but lesser upper lip thickness and strain than Caucasian population.

This is an Open Access (OA) journal, and articles are distributed under the terms of the [Creative Commons Attribution-NonCommercial-ShareAlike 4.0 License](https://creativecommons.org/licenses/by-nc-sa/4.0/), which allows others to remix, tweak, and build upon the work non-commercially, as long as appropriate credit is given and the new creations are licensed under the identical terms.

For reprints contact: reprint@ipinnovative.com

1. Introduction

The growth of the cranial base has been accepted to play a major role in influencing the maxillofacial growth. Thus, there is possibility that any changes in cranial base orientation may influence the sagittal malposition of jaws resulting in facial disharmony.¹

Anthropological research studies indicate that each racial group has its own standards. Hence it is not possible to apply the same cephalometric standards to all races. The norm concept occupies a prominent place to clarify problems relating to diagnosis and treatment.^{2,3}

Although patients seeking orthodontic treatment range from very young to adults but it is the children who form the bulk of the orthodontic patients. So, keeping in mind the targeted age group priority should be given to obtain the

solid cephalometric norm for children in the 9-16-year age group.

Cephalometric norms have been established using various analysis for the different strata of Indian population.⁴⁻¹⁴ Since no anthropometric investigations were conducted in the population of Odisha, this study established a cephalometric norm for the Odia Population which would act as a data base for all future reference.

2. Materials and Methods

After ethical committee approval, a total of 60 lateral cephalometric radiographs of coastal odisha children (males-29, females-31; aged 9-16 years) with balanced and acceptable facial profile, normal overjet and overbite, class I skeletal and dental relationship, and no previous orthodontic treatment were selected as sample which were further subdivided into two groups according to age i.e from 9 to 12 years (M-15, F-15) and 13 to 16 years (M-14, F-16).

* Corresponding author.

E-mail address: dr.mitalimishra@gmail.com (M. Mishra).

Table 1: Descriptive statistics of cranial base.

Parameters	Total Sample (N=60)		Male 9-12 Years (N=15)		Female 9-12 Years (N=15)		Significance	Male 13-16 Years (N=14)		Female 13-16 Years (N=16)		Significance
	Mean	SD	Mean	SD	Mean	SD		Mean	SD	Mean	SD	
N-S	55.07	2.16	55.67	2.45	54.03	1.98	*	55.07	2.01	55.47	2.02	NS
S-Ba	36.97	2.46	37.17	2.42	36.67	1.54	NS	37.82	3.49	36.34	2.09	NS
<N-S-Ar	125.00	5.73	124.27	6.20	123.67	5.54	NS	124.64	4.14	127.25	6.45	NS
<S-Ar-Go	138.97	7.08	140.40	5.73	139.67	9.19	NS	138.29	4.18	137.56	8.23	NS
Ar-Ptm	28.32	2.18	27.40	1.71	28.43	3.10	NS	29.07	1.36	28.41	2.00	NS
Ptm-N	39.68	2.55	40.57	2.70	37.77	1.72	**	40.00	2.72	40.37	2.15	NS

NS=Not significant*Significant at 5% level (p<0.05), **Significant at 1% level (p<0.01), ***Significant at 0.1% level (p<0.001)

Table 2: Descriptive statistics of skeletal maxilla.

Parameters	Total Sample (N=60)		Male 9-12 YEARS (N=15)		Female 9-12 YEARS (N=15)		Significance	Male 13-16 YEARS (N=14)		Female 13-16 YEARS (N=16)		Significance
	Mean	SD	Mean	SD	Mean	SD		Mean	SD	Mean	SD	
< SNA	82.68	3.62	81.40	3.92	83.20	4.04	NS	82.61	2.24	83.47	3.88	NS
N to A on HP	0.44	3.05	1.37	3.19	0.10	3.49	NS	0.39	2.31	-0.06	3.14	NS
RMFL	67.76	3.19	67.00	3.84	66.10	2.83	NS	68.64	2.40	69.25	2.74	NS
EPL	43.28	3.67	43.77	3.24	42.03	2.47	NS	43.25	4.02	44.03	4.60	NS
N-ANS(HP)	40.56	2.36	39.77	1.54	39.40	2.10	NS	42.54	1.78	40.66	2.70	*
N-PNS (HP)	40.71	3.05	39.93	2.44	39.87	2.93	NS	42.54	3.67	40.62	2.64	NS

Table 3: Descriptive statistics of dentoalveolar maxilla.

Parameters	Total Sample (N=60)		Male 9-12 Years (N=15)		Female 9-12 Years (N=15)		Significance	Male 13-16 Years (N=14)		Female 13-16 Years (N=16)		Significance
	Mean	SD	Mean	SD	Mean	SD		Mean	SD	Mean	SD	
<U1 to NA	24.63	4.86	24.80	4.57	23.73	5.02	NS	28.00	5.26	22.37	3.01	***
U1 to NA	3.58	1.70	3.43	1.19	3.33	2.52	NS	4.11	1.61	3.50	1.25	NS
<U1 to A-vertical	3.14	1.89	2.63	1.56	3.23	2.66	NS	3.21	1.29	3.47	1.83	NS
<U1 to A-Pog	5.50	1.83	6.20	1.61	5.07	2.10	NS	5.29	1.17	5.44	2.17	NS
<U1 to SN plane	108.33	6.60	106.63	5.89	108.53	8.89	NS	112.14	5.20	106.41	4.59	**
<U1 to PP	65.30	5.77	66.57	6.36	65.80	7.21	NS	61.75	4.47	66.75	3.36	**
U6 to Ptv	11.94	3.26	11.13	2.97	11.13	2.66	NS	13.14	2.39	12.41	4.36	NS
U1 to NF	24.76	2.48	25.33	2.78	23.60	1.84	NS	25.61	1.72	24.56	2.98	NS
U6 to NF	18.67	1.76	18.43	1.82	17.73	1.12	NS	19.43	1.86	19.09	1.81	NS

Table 4: Descriptive statistics of skeletal mandible.

Parameters	Total sample (n=60)		Male 9-12 years (n=15)		Female 9-12 years (n=15)		Significance	Male 13-16 years (n=14)		Female 13-16 years (n=16)		Significance
	Mean	SD	Mean	SD	Mean	SD		Mean	SD	Mean	SD	
<SNB	79.43	3.48	77.47	2.77	80.57	4.59	*	79.79	2.26	79.91	3.29	NS
N to Pog	-3.12	4.79	-4.37	6.55	-2.17	5.37	NS	-3.29	2.78	-2.72	3.75	NS
RMndL	81.58	4.28	79.70	4.77	80.77	5.23	NS	82.32	3.20	83.47	2.81	NS
Go-Pog	57.32	3.17	55.57	3.60	56.87	3.05	NS	57.96	2.66	58.81	2.55	NS
B-Pog	3.87	1.16	3.63	1.25	4.07	0.92	NS	4.07	1.39	3.72	1.08	NS
<MP -HP	23.49	4.71	26.90	3.07	23.00	6.14	*	21.36	3.29	22.62	4.13	NS
<FMA	26.24	4.09	28.00	4.00	26.13	4.73	NS	25.07	2.73	25.72	4.34	NS
<SN-GoGn	30.49	4.71	33.90	3.07	30.00	6.14	*	28.36	3.29	29.62	4.13	NS
Ar-Go length	34.54	3.30	32.90	2.74	34.13	4.50	NS	35.43	2.47	35.69	2.61	NS
<Ar-Go-N	55.19	3.43	56.03	1.95	55.33	3.72	NS	54.43	2.10	54.94	4.96	NS
<N-Go-Gn	71.01	3.22	73.17	2.75	71.13	3.72	NS	69.79	2.33	69.94	2.98	NS
Total gonial angle	126.20	4.85	129.20	3.55	126.47	4.66	NS	124.21	2.55	124.88	6.33	NS

Table 5: Descriptive statistics of dentoalveolar mandible.

Parameters	Total sample (n=60)		Male 9-12 years (n=15)		Female 9-12 years (n=15)		Significance	Male 13-16 years (n=14)		Female 13-16 years (n=16)		Significance
	Mean	SD	Mean	SD	Mean	SD		Mean	SD	Mean	SD	
<L1 to NB	28.67	5.27	29.07	4.25	29.43	4.71	NS	28.82	6.01	27.47	6.19	NS
L1 to NB	5.21	1.74	5.90	1.48	4.97	2.06	NS	5.04	1.34	4.94	1.94	NS
<L1 to MP	96.58	5.86	96.40	5.09	95.80	4.09	NS	98.89	7.03	95.47	6.74	NS
<L1 to A-Pog	25.60	4.12	25.10	3.37	26.50	3.90	NS	26.64	5.35	24.31	3.65	NS
L1 to A-Pog	2.51	1.66	3.03	1.23	2.63	1.92	NS	1.89	1.81	2.44	1.57	NS
L1 to MP	28.79	2.11	29.30	2.30	27.83	1.79	NS	29.18	1.54	28.87	2.47	NS
L6 to MP	22.07	1.94	21.97	1.96	21.23	1.28	NS	23.25	1.57	21.91	2.35	NS

NS=Not significant,

*Significant at 5% level (p<0.05) , **Significant at 1% level (p<0.01), ***Significant at 0.1% level (p<0.001)

Table 6: Descriptive statistics of maxillo mandibular relationships.

Parameters	Total sample (n=60)		Male 9-12 years (n=15)		Female 9-12 years (n=15)		Significance	Male 13-16 years (n=14)		Female 13-16 years (n=16)		Significance
	Mean	SD	Mean	SD	Mean	SD		Mean	SD	Mean	SD	
WITS	-1.00	2.17	-1.53	1.87	0.33	2.58	*	-1.43	1.44	-1.37	2.19	NS
<ANB	3.35	2.06	3.93	1.98	3.03	2.38	NS	2.82	1.70	3.56	2.11	NS
M-M	13.66	2.60	12.70	2.43	14.00	2.88	NS	13.68	2.41	14.22	2.65	NS
ANS-Gn	46.18	3.57	47.27	4.59	44.87	2.45	NS	45.89	2.69	46.66	3.92	NS
Angle of convexity	5.79	3.80	6.93	3.24	5.40	3.46	NS	4.93	3.95	5.84	4.49	NS
Y- axis	60.22	3.97	61.60	4.19	59.13	3.40	NS	61.21	3.91	59.06	4.01	NS
Jarabak ratio	0.67	0.04	0.63	0.03	0.67	0.05	*	0.69	0.03	0.67	0.03	*
AUFH/ALFH	0.81	0.07	0.78	0.07	0.82	0.05	NS	0.85	0.08	0.81	0.06	NS
Bjorks sum	390.17	4.66	393.87	3.34	389.80	5.63	*	387.14	3.28	389.69	3.66	*
<PP - MP	22.82	5.12	23.87	5.87	23.47	5.36	NS	22.04	3.88	21.94	5.32	NS
Interincisal angle	123.13	9.10	122.13	8.48	124.20	7.83	NS	118.79	10.32	126.87	8.60	*

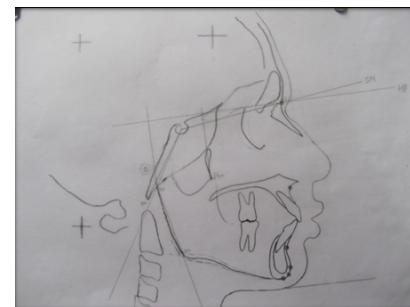
NS=Not significant

*Significant at 5% level (p<0.05) , **Significant at 1% level (p<0.01), ***Significant at 0.1% level (p<0.001)

Table 7: Descriptive statistics of soft tissues.

Parameters	Total sample (n=60)		Male 9-12 years (n=15)		Female 9-12 years (n=15)		Significance	Male 13-16 years (n=14)		Female 13-16 years (n=16)		Significance
	Mean	SD	Mean	SD	Mean	SD		Mean	SD	MEAN	SD	
NFA	35.77	3.15	37.27	3.61	34.73	2.52	*	35.14	2.14	35.87	3.65	NS
NLA	111.50	9.19	112.13	9.41	113.27	8.78	NS	109.00	9.00	111.44	9.89	NS
NMA	125.78	4.44	125.07	5.02	127.20	4.23	NS	125.64	3.54	125.22	4.85	NS
MCA	112.13	4.99	112.33	5.96	110.67	3.44	NS	112.71	5.57	112.81	4.89	NS
SMNA	117.73	8.16	115.07	10.54	118.00	7.33	NS	117.43	5.47	120.25	8.27	NS
UL/LL	0.49	0.04	0.49	0.03	0.47	0.05	NS	0.50	0.02	0.48	0.04	NS
MAX.PM	4.43	3.36	2.47	2.63	4.37	4.06	NS	5.39	2.43	5.50	3.39	NS
MAND.PM	-1.83	3.95	-3.27	2.03	-0.47	5.36	NS	-2.43	3.34	-1.25	4.04	NS
ULP	3.70	1.57	4.07	1.59	3.07	1.61	NS	4.61	1.61	3.16	1.03	**
LLP	3.07	1.70	3.53	1.64	3.27	1.69	NS	3.57	1.68	2.03	1.44	*
UL-E	-1.02	2.30	-0.83	2.18	-1.67	2.60	NS	0.00	1.92	-1.47	2.29	NS
LL-E	1.12	2.26	1.37	2.08	1.07	1.93	NS	1.96	2.42	0.22	2.44	NS
ULT	10.73	1.52	10.30	1.22	9.90	1.68	NS	11.00	0.92	11.69	1.54	NS
ULS	10.33	1.65	10.17	1.58	9.07	1.49	NS	11.32	1.73	10.81	0.96	NS

NS=Not significant

*Significant at 5% level ($p<0.05$), **Significant at 1% level ($p<0.01$), ***Significant at 0.1% level ($p<0.001$)**Fig. 1:** Patient positioned within the cephalostat.**Fig. 3:** A Lateral Cephalogram.**Fig. 2:** Ear rods and the nasal positioner secured for recording of cephalogram.**Fig. 4:** A Lateral Cephalogram.

All the selected subjects were native of coastal Odisha. The Lateral Cephalometric Radiographs of all the subjects were Standardized in one machine Pantomex-2000F (Figures 1 and 2). The cephalometric landmarks were traced and analysed by a single examiner to eliminate possible errors (Figures 3, 4, 5, 6, 7, 8, 9 and 10).

Different angular and linear parameters were obtained and grouped under 7 categories as follows.

1. Cranial base
2. Skeletal maxillae
3. Dentoalveolar maxilla
4. Skeletal mandibles

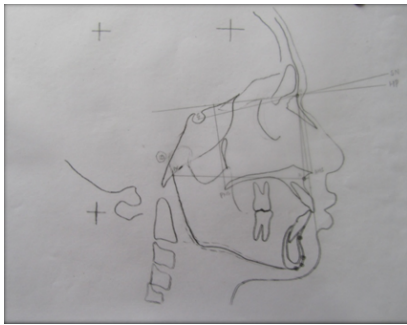


Fig. 5: Tracings of skeletal maxilla parameters.

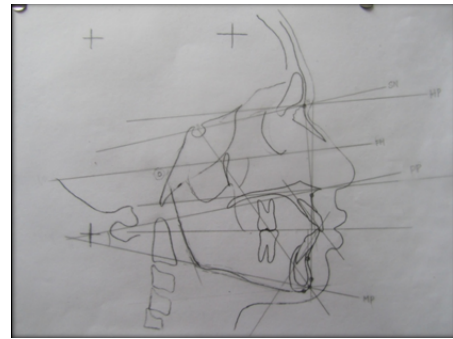


Fig. 9: Tracings of maxillo mandibular parameters.

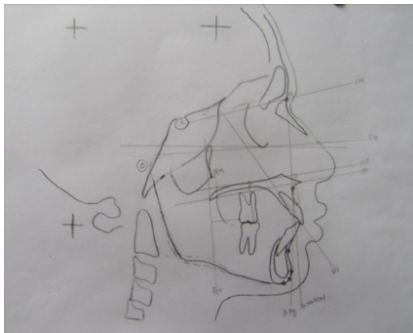


Fig. 6: Tracings of dentoalveolar maxilla parameters.

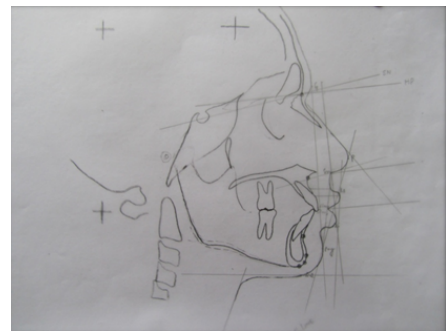


Fig. 10: Tracings of soft tissue parameters.

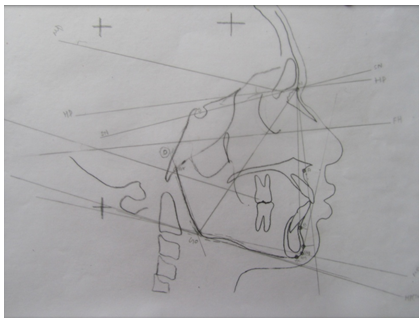


Fig. 7: Tracings of skeletal mandible parameters.

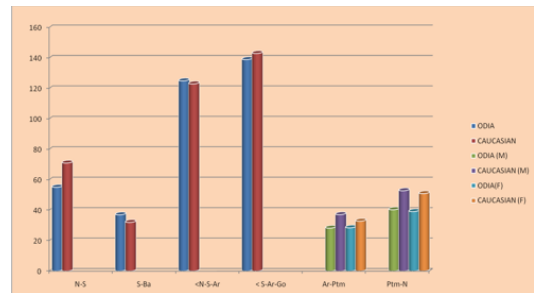


Fig. 11: Comparison of cranial base standards of odiapopulation with Caucasians.

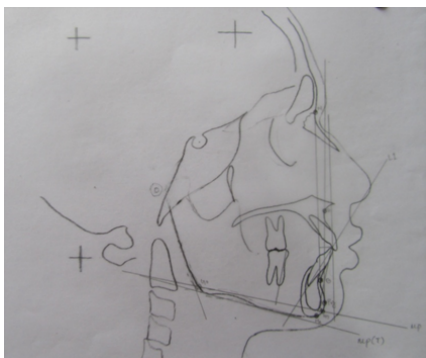


Fig. 8: Tracings of dentoalveolar mandible parameters.

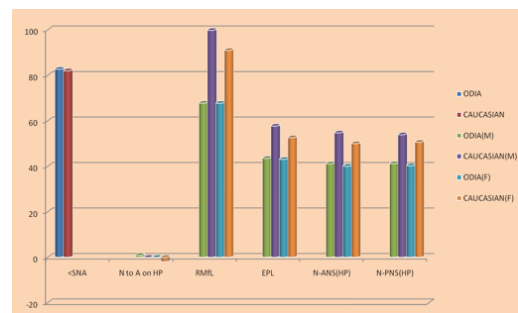


Fig. 12: Comparison of skeletal maxilla standards of odiapopulation with Caucasians.

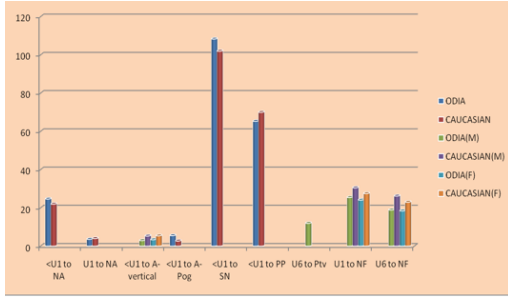


Fig. 13: Comparison of dentoalveolar maxilla standards ofodia population with Caucasian.

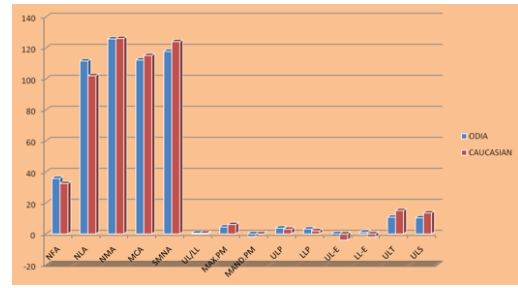


Fig. 17: comparison of soft tissue standards of odiapopulation with Caucasians.

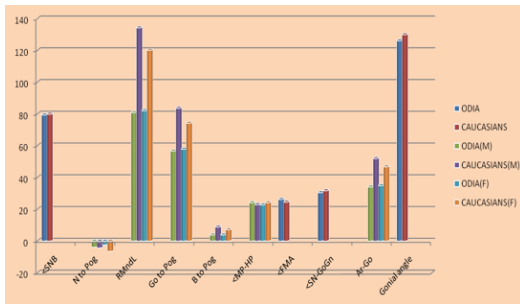


Fig. 14: Comparison of skeletal mandible standards ofodia population with Caucasian.

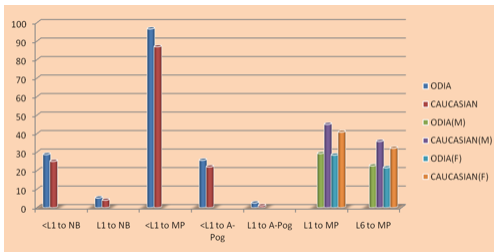


Fig. 15: Comparison of dentoalveolar mandible standards of odia population with Caucasian.

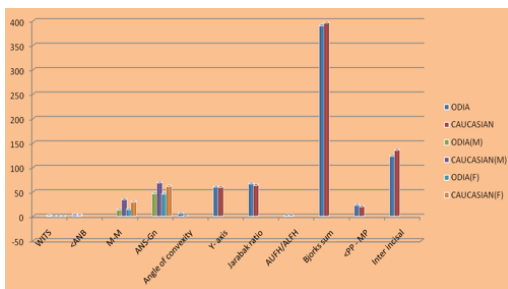


Fig. 16: Comparison of maxillo-mandible standards of odiapopulation with Caucasians.

- 5. Dentoalveolar mandible
- 6. Maxillomandibular relation
- 7. Soft tissue

3. Results

The data were subjected to statistical analysis using SPSS 13 version to obtain the mean and standard deviation for each parameter and are tabulated in Tables 1, 2, 3, 4, 5, 6 and 7. Independent sample t -tests were performed to compare Odia and Caucasians and to compare male and female groups.

4. Discussion

India is famous for its unity in diversity. A north Indian Kashmiri has very different facial pattern than a south Indian Tamil or a northeast Assamese. This mandates to have a set of cephalometric norms specific to that population of a region. Hence cephalometric norms have been established for the different strata of Indian population. Similarly, different racial groups worldwide have been studied for their cephalometric standards^{15–26}

Several established cephalometric norms accepted and followed by the researchers worldwide are Downs²⁷ (5skeletal and 5 dental), Steiner²⁸ (7 skeletal, 10 dental and 1 soft tissue), Tweed²⁹ (3skeletal), Ricketts³⁰ (4skeletal,3dental and 1soft tissue), McNammara³¹ (8 skeletal, 2 dental and 1 soft tissue), Bjork³²–Jarabak³³ (23 skeletal,7 dental and 2 soft tissue), Burstone³⁴ (15 skeletal and 9 dental). The current study contains 65 different parameters derived from various milestone analysis, so that wide range of facial skeletal and soft tissue norms grouped in a specific manner.

4.1. Cranial base

Any changes in cranial base orientation may influence the sagittal malposition of jaws resulting in facial disharmony.

The data obtained in reference to anterior cranial base length, posterior cranial base length, saddle angle, articular angle, Ar-Ptm and N-Ptm linear distance of

Coastal Odia children were found to be statistically different ($p < 0.0001$) when compared with the established norms for Caucasians.^{33,34} (Figure 11). Similar findings were also observed in a study on Saudi population.³⁵

It was observed that males in the age group of 9-12 years have a greater anterior cranial base length than the females in relation to N-S and Ptm-N linear distance which was consistent with the findings by Ursi et al.³⁶ and Trivedi et al.³⁷

4.2. Skeletal maxilla

The parameters \angle SNA, N to A, relative midfacial length and effective palatal length reflect the anteroposterior dimensions of the maxillary basal bone and N-ANS and N-PNS represent the vertical dimensions of maxilla giving an overall idea of maxillary basal bone in both planes.

There was no significant intergender differences for the parameters \angle SNA and the linear distance of N to A, the relative maxillary length, effective palatal length. The only maxillary skeletal base parameter which shows significant ($p = 0.035$) intergender difference in 13-16 year age group is N-ANS linear distance (i.e anterior vertical height of maxilla) where males have more anterior vertical maxillary height than females.

The linear parameters of the present study defining the structure and size of maxilla (Relative midfacial length, Effective palatal length, N-ANS and N-PNS linear distance) show highly statistically significant difference ($p < 0.001$) when compared with Caucasians, who have higher degree of linear measurements irrespective of gender. Maxilla of Caucasians is larger in anteroposterior and vertical dimensions than Odia population. Figure 12

4.3. Dentoalveolar maxilla

The parameters U1 to NA, U1 to A vertical, U1 to A Pog, U1 to SN and U1 to palatal plane describes about the upper incisor inclinations.^{29–33,38} Similarly, upper molar anteroposterior positioning may be explained by the parameter U6 to Ptv.³¹ Vertical positioning of maxillary teeth is represented by the parameters U1 to NF and U6 to NF.³⁵

In the present study, U1 to NA ($p < 0.001$) and U1 to SN ($p < 0.01$) angular measurements are significantly higher in males than females and the U1 to palatal plane angular measurement was significantly less in males than females ($p < 0.05$) in the 13-to-16-year age group indicating more upright incisors in adolescent Odia females. These findings are in agreement with the earlier study on central Indian population.³⁹

The \angle U1 to A-vertical, \angle U1 to palatal plane, U1 to NF and U6 to NF parameters are lesser than Caucasians whereas \angle U1 to NA, \angle U1 to A-pog, \angle U1 to SN parameters are greater than the Caucasians (FIGURE 15). Thus the

Odia population has more proclined upper incisors than the Caucasians. Similar observations were made by Syamkumar B et al.¹³ (2009) and Mohammad HA et al.⁴⁰ (2011) in Malay population.

U1 to NF and U6 to NF show that Odia children have smaller upper dental height in anterior and posterior region than Caucasians sample of Burstone.³⁵ Figure 13

4.4. Skeletal mandible

In the present study the parameters \angle SNB, N to Pog, Relative mandibular length, Go to Pog and B to Pog represents the anteroposterior positioning of the mandibular bone whereas \angle Mp-Hp, \angle FMA, \angle SN-GoGn, Ar-Go length and Gonial angle explains the vertical dimension of the mandible.

In the present study, \angle SNB showed significant ($p < 0.05$) sexual dimorphism in 9-12yr age group which signifies that in males of this age group mandible is more posteriorly positioned with respect to cranium than females but \angle SNA does not show the same trend. This can be explained by the fact that mandibular growth resembles general body growth curve pattern whereas maxillary growth resembles neural growth curve pattern of 'Scammon's curve of systemic growth'.⁴¹ Furthermore, as the adolescent growth spurt in males appear later than females the \angle SNB of males catch up with females in 13-16 age group with no statistically significant different findings.

The relative mandibular length, Go to Pog, B to Pog, Ar-Go ($p < 0.0001$) and total gonial angle ($p < 0.001$) are found to be decreased significantly than Caucasians which can be explained considering stature of Caucasians. The \angle FMA angle found to be increased significantly in the present study ($p < 0.0001$) than Tweed's norms²⁹ Thus, concluded that coastal Odia population has steeper mandibular plane angle than Caucasians. Figure 14

4.5. Dentoalveolar mandible

The parameters L1 to NB, \angle L1 to MP and L1 to A-Pog describes about the inclination of mandibular incisors whereas the vertical positioning of mandibular teeth is explained by the parameters L1 to MP and L6 to MP.

The parameters showing the dentoalveolar relationships of mandible had no significant intergender difference within the 9-12yr and 13-16yr age groups. In Odia population the dentoalveolar parameters of mandible i.e L1 to NB, \angle L1 to MP, L1 to A-Pog were significantly ($p < 0.0001$) greater indicating more proclined lower incisors than Caucasians which is in agreement with earlier studies^{7,15,39,42,43} Figure 15. In the current study L1 to MP and L6 to MP measurements indicating the vertical height of mandibular incisors and molars, are significantly smaller ($p < 0.0001$) than the Caucasians, this finding supported by the study of Trivedi et al.³⁷ in

Rajasthan.

4.6. Maxillo mandibular relationship

Wits appraisal describes about the anteroposterior relation between maxilla and mandible. In the present study negative wits value in males and positive wits value in females of 9-12yr age significantly ($p<0.05$) shows that males have the mandible more posteriorly positioned than females which is in consonant with earlier observation of $<SNB$ in this age group. In 13-16yr age group there is no significant difference between both the sexes. Similar conclusion established by earlier Indian studies.³⁹

In the present study Jarabak ratio is found to be greater in females than males in 9-12yr age in significant manner ($p<0.05$) and smaller in females than the males in 13-16yr age in significant manner ($p<0.05$), which denotes that in 9-12yr of age females have more horizontal growth tendency carrying mandible more anteriorly than males but in the older age group i.e 13-16 years males show more horizontal growth than females thus catching up the anterior mandibular position. Similarly, Bjorks sum was greater in males than females of 9-12yr age group whereas it is reverse in 13-16yrs. Interincisal angle is significantly higher in females of 13-16yr age ($p<0.05$) than males indicating more upright incisors in females.

The maxillomandibular parameters such as $<ANB$, Angle of convexity, Jarabak ratio, $<PP-MP$ when compared with Caucasians were found to be significantly greater ($p<0.0001$). On the contrary the $ANS-Gn$, Bjorks sum, Interincisal angle were found to be less than the Caucasians ($p<0.0001$) Figure 16.

The $<ANB$ readings can be misleading by vertical and A-P position of nasion which is a landmark of cranial base.³² Thus, the reliability of ANB as a parameter to describe maxillomandibular relationship in sagittal plane is questionable. The present findings support Jacobson's findings¹ that wits appraisal is more reliable parameter than $<ANB$ for describing maxillomandibular relationship.

The mean angle of convexity in Coastal Odias is found to be greater (5.79 ± 3.79) than Downs Caucasian norms (0 ± 5.1). Similar observation was made by Gleis et al.²⁵ on Israeli population. Greater $<PP-MP$ values than Caucasians indicates steeper mandibular plane pattern in coastal Odia children.

4.7. Soft tissue

The soft tissue contours designed to evaluate how the integuments overlay the dentofacial hard tissues of the face in a coastal Odia child.

In the present study, significant ($p<0.05$) intergender difference is noted in upper and lower lip prominence with males having greater lip prominence than females of 13-16yr age group. As noted earlier coastal Odia males of similar age group have more proclined maxillary

anterior teeth than females which may explain this greater lip prominence in males. Nasofacial angle is found to be significantly ($p<0.05$) more in males of 9-12yr age than females. The nasolabial angle in this study has large standard deviation (111.5 ± 9.19) similar to findings observed in the study conducted on Caucasian American males.⁴⁴

The nasolabial angle, upper lip protrusion and upper lip to E-line, lower lip prominence and lower lip to E-line in Odia population were significantly ($p<0.0001$) larger than Caucasians indicating more prominent upper lip and lower lip. Ricketts.³⁰ found upper lip to be ideally 4mm posterior to aesthetic plane for adult females while in males it is a bit more retracted and lower lip be ideally 2.0 mm posterior to this line in males. The mean value for E-line to upper lip in present study is (-1.017 ± 2.303 mm) and the mean value for E-line to lower lip is 1.125 ± 2.264 which are more than normal value ($-4\text{mm}\pm 2\text{mm}$) indicating that the Coastal Odia children have more protrusive upper and lower lips. Finally, the upper lip thickness and upper lip strain are found to be significantly less than Caucasians⁴⁴ ($p<0.0001$).Figure 17

5. Conclusion

It would be preferable to use specific coastal Odia norms, separate for gender, because a comparison has revealed statistically significant differences in most variables between males and females and between coastal Odias and Caucasians.

Overall dimension of cranial base, maxilla and mandible are smaller in Coastal Odia children. Odia children have steeper mandibular plane angle, more proclined upper and lower incisors and smaller upper and lower dental height in anterior and posterior region. Coastal Odia children have greater upper and lower lip prominence but lesser upper lip thickness and strain than Caucasian population.

Coastal Odia males have greater anterior cranial base length, steeper mandibular plane, more posteriorly positioned mandible than females in 9-12 yr age group. In 13-16yr age group males have greater anterior vertical height of maxilla and less upright incisors than female. The Jarabak ratio is greater in females than males in 9-12-year age group.

6. Source of Funding

None.

7. Conflict of Interest

None.

References

1. Jacobson A. Radiographic cephalometry; 1995. p. 322.

2. Kapoor S, Kapoor DN, Jaiswal JN. Cephalometric evaluation of skeleton-dental morphology in transitional dentition. *J Indian Soc Pedodont Prevent Dent*. 2000;18(2):80–5.
3. Schwartz H. The norm concept -its use and abuse. The Angle orthodontist. vol. 23; 1953. Available from: <https://www.ukessays.com/essays/sociology/the-social-factual-norms-by-durkheim-sociology-essay.php>.
4. Kotak VB. Cephalometric evaluation of Indian girls with neutral occlusion. *J Indian Dent Assoc*. 1964;36(1):183.
5. Nanda R, Nanda RS. Cephalometric study of the dentofacial complex of North Indians. *Angle Orthodontist*. 1969;39(1):22–8.
6. Mohode R, Betigiri A. An establishment of skeletal & soft tissue norms for Indian Marathi population and relating it with the perception of balanced profiles by lay person. *Journal of Indian Orthodontic society*. 2008;28:25–33.
7. Bhat M, Sudha P, Tandon S. Cephalometric norms for Bunt and Bramhin children of Dakhina Kannada based on Mc Namara's analysis. *J Indian Soc Pedodont and Prevent Dent*. 2001;19(2):22–8.
8. Mehta OP, Gupta DS. A study of cephalometric appraisal of the inheritance of craniofacial pattern in Gorkhas. *J Indian Soc Pedodont Prev Dent*. 2008;26(3):121–4.
9. Kannappan JG, Balasubramaniam MR. Cephalometric norms for Madras city population. *J Indian Dent Assoc*. 1976;48(1):359–63.
10. Kharbanda OP, Sidhu SS, Sundram KR. Cephalometric profile of Aryo-draavidians. *J Indian Orthodont Soc*. 1989;20(1):89–94.
11. Anuradha T, Taneja JR, Chopra SL. Steiners norms for north Indian pre-school children. *J Indian Soc Pedodont Prevent Dent*. 1990;8(1):108–9.
12. Abraham KK, Tandon S, Paul U. Selected cephalometric norms in south kanara children. *J Indian Soc Pedodont Prevent Dent Sept*. 2000;18(3):95–102.
13. Syamkumar B, Shree P, Revathi V. Dentofacial Cephalometric Norms for Hyderabad Population. *J Orofac Sci*. 2009;1(1):7–13.
14. Grewal H, Sidhu SS, Kharbanda OP. Cephalometric appraisal of the craniofacial pattern in Indo-aryans. *J Indian orthodont Soc*. 1995;26(2):43–8.
15. Argyropoulos E, Sassouni U. Comparison of the dentofacial patterns for native Greek and American Caucasian adolescents. *Am J Orthodont Dentofac Orthoped*. 1989;95(1):238–87.
16. Alcalde RE, Jinno T, Pogrel MA, Matsumura T. Cephalometric norms in Japanese adults. *J Oral Maxillofac Surg*. 1998;56(2):129–63.
17. Alexander TL, Hitchcock HP. Cephalometric standards for American Negro children. *Am J Orthodont Dentofac Orthoped*. 1978;74(3):298–304.
18. Cerci V, Martins JE, Oliveira MA. Cephalometric standards for white Brazilians. *Int J Adult Orthodont Surg*. 1993;8(4):287–92.
19. Cooke MS, Wei SH. A comparative study of southern Chinese and British Caucasian cephalometric standards. *The Angle Orthodontist*. 1989;59:131–139.
20. Hwang HS, Kim WS, Mcnamara JA. Ethnic differences in the soft tissue profile of Korean and European-American adults with normal occlusions and well-balanced faces. *Angle Orthodontist*. 2002;72(1):72–80.
21. Obloj B, Fudalej P, Dudkiewicz Z. Cephalometric standards for Polish 10-year-olds with normal occlusion. *The Angle Orthodontist*. 2008;78(2):262–71.
22. Hassan A. Cephalometric norms for Saudi adults living in the Western Region of Saudi Arabia. *The Angle Orthodont*. 2006;76(1):109–13.
23. Moldez MA, Sato K, Sugawara J, Mitani H. Linear and angular filipino cephalometric norms according to age and sex. *Angle Orthodont*. 2006;76(5):800–5.
24. Drevensekm FF, Vidmar G. Cephalometric standards for Slovenians in the mixed dentition period. *Eur J Orthodont*. 2006;28(1):51–7.
25. Gleis R, Brezniak N, Lieberman M. Israeli cephalometric standards compared to Downs and steiner analysis. *Angle Orthodont*. 1989;60(1):35–40.
26. Shaikh AJ, Alvi AR. Comparison of cephalometric norms of esthetically pleasing faces. *American Journal of Orthodontics and dentofacial orthopedics*. 2009;.
27. Downs WB. Variations in facial relationship. Their significance in treatment and prognosis. *Am J Orthodont Dentofac Orthoped*. 1948;34(10):812–40.
28. John W, Hagg U, Rabie AB. Chinese norms of McNamara's cephalometric analysis. *Angle Orthodont*. 2007;77(1):12–20.
29. Tweed CH. The Frankfort-mandibular-incisal angle (FMIA) in orthodontic diagnosis treatment planning and prognosis. *Angle Orthodont*. 1954;24(1):121–69.
30. Ricketts RA. The influence of orthodontic treatment on facial growth and development. *Angle Orthodont*. 1960;30(3):103–36.
31. Mcnamara JA. A method of cephalometric evaluation. *Am J Orthodont Dentofac*. 1984;86(6):449–69.
32. Bjork A. The face in profile. *Am J Orthodont Dentofac Orthodont*. 1948;34:691–9.
33. Jarabak JR, Fizzell JA. Technique and Treatment with Lightwire Edgewise Appliance. St Louis, Mo: CV Mosby; 1972.
34. Burstone CJ, James RB, Legan H, Murphy GA, Norton LA. Cephalometrics for Orthognathic Surgery. *J Oral Surg*. 1979;36(4):269–77.
35. Talic N, Al-Barakati S. Cephalometric measurements of a Pakistani adult sample according to Jarabak's analysis. *J Pak Med Assoc*. 2009;11:1345–8.
36. Ursi WJ, Trotman CA, Mcnamara JA, Behrents RG. Sexual dimorphism in normal craniofacial growth. *Angle Orthodont*. 1993;63(1):47–56.
37. Trivedi K, Singh S, Shivamurthy DM, Doshi J, Shyagali T, Patel B. Analysis of cephalometrics for orthognathic surgery: determination of norms applicable to Rajasthani population. *National journal of maxillofacial surgery*. 2010;(2):1–1.
38. Steiner CC. Cephalometric for you and me. *Am J Orthodont Dentofac Orthoped*. 1953;39(10):729–54.
39. Yadav A, Datarkar AN, Rajan R, Chaoji KH. Cephalometric norms for Central Indian population using Burstone and Legan analysis. *Indian J Dent Res*. 2011;22(1):28–33.
40. Mohammad HA, Hassan M, Hussain S. Cephalometric evaluation for Malaysian Malay by Steiner analysis. *Sci Res Essays*. 2011;6(3):627–34.
41. Malina RM, Bouchard C, Bar-Or O. Growth, maturation, and physical activity; 2004. p. 712.
42. Hamdan AM, Rock WP. Cephalometric norms in an Arabic population. *J Orthodont*. 2001;28(4):297–300.
43. Janson G, De Freitas M, Pinzan A, Franco EJ. Craniofacial characteristics of Caucasian and Afro-Caucasian Brazilian subjects with normal occlusion. *J Appl Oral Sci*. 2011;19(2):118–24.
44. Legan HL, Burstone CJ. Soft tissue cephalometric analysis for orthognathic surgery. *J Oral Surg*. 1980;38(10):744–51.

Author biography

Jitendra Kumar Dash, Assistant Professor

Jayant Kumar Dash, Professor and Principal SCB Dental College and Hospital

Surya Kanta Das, Professor & Head

Prasanna Kumar Sahoo, Ex-Professor

Mitali Mishra, Assistant Professor

Cite this article: Dash JK, Dash JK, Das SK, Sahoo PK, Mishra M. Cephalometric norms in coastal Odisha children. *J Contemp Orthodont* 2022;6(3):105-113.