

Content available at: <https://www.ipinnovative.com/open-access-journals>

International Journal of Pharmaceutical Chemistry and Analysis

Journal homepage: <https://www.ijpca.org/>

Original Research Article

Phytochemical analysis and antimicrobial activity of *Lantana camara*Vishal H. Thorat¹, Firoj A. Tamboli^{1,*}, Asha S. Jadhav², Rohankumar Chavan³¹Dept. of Pharmacognosy, Bharati Vidyapeeth College of Pharmacy, Kolhapur, Maharashtra, India²Dept. of Pharmacology, Bharati Vidyapeeth College of Pharmacy, Kolhapur, Maharashtra, India³Dept. of Pharmaceutical Chemistry, Bharati Vidyapeeth College of Pharmacy, Kolhapur, Maharashtra, India

ARTICLE INFO

Article history:

Received 30-11-2021

Accepted 09-12-2021

Available online 25-01-2022

Keywords:

Lantana camara

Phytochemical screening

Antimicrobial

ABSTRACT

Background: *Lantana camara*, Family: Verbenaceae has been an important coniferous plant in ayurvedic and indigenous medicinal systems. The Clinical trials and animal research support the use of *Lantana camara* for anti-spasmodic, carminative, anti-tumor, anti-inflammatory, anti-malarial, anti-ulcer genic, treatment of emotional stress and trauma, anti-microbial, insecticidal, fungicidal, and asthma.

Materials and Methods: The present study was planned for extraction, phytochemical analysis, powder characteristics and the antimicrobial activity of the of *Lantana camara* crude extract.

Result and Conclusion: Phytochemical analysis showed presence of various secondary metabolites like alkaloids, saponins, tannins, glycosides and terpenoids. Antibacterial activity of *Lantana camara* against *Staphylococcus aureus* showed positive results.

This is an Open Access (OA) journal, and articles are distributed under the terms of the [Creative Commons Attribution-NonCommercial-ShareAlike 4.0 License](https://creativecommons.org/licenses/by-nc-sa/4.0/), which allows others to remix, tweak, and build upon the work non-commercially, as long as appropriate credit is given and the new creations are licensed under the identical terms.

For reprints contact: reprint@ipinnovative.com

1. Introduction

Lantana camara (common lantana) is a species of flowering plant within the verbena family (Verbenaceae), native to the American tropics. Other common names of *Lantana camara* include big-sage (Malaysia), wild-sage, red-sage, white-sage (Caribbean), tickberry (South Africa), West Indian lantana and umbelanterna.^{1,2} As an ornamental, *Lantana camara* is often cultivated indoors, or in a conservatory, but can also thrive in a garden with sufficient shelter.

Flowers come in many different colours, including red, yellow, white, pink and orange, which differ depending on location in inflorescences, age, and maturity. The flower has a tutti-frutti smell with a peppery undertone. After pollination occurs the colour of the flowers changes (typically from yellow to orangish, pinkish, or reddish); this is believed to be a signal to pollinators that the pre-

change colour contains a reward as well as being sexually viable, thus increasing pollination efficiency. The leaves are broadly ovate, opposite, and simple and have a strong odour when crushed. The fruit of *Lantana camara* is a berry-like drupe which turns from green to dark purple when mature. Green unripe fruits are inedible to humans and animals alike. Because of dense patches of hard spikes on their rind, ingestion of them can result in serious damage to the digestive tract. Both vegetative (asexual) and seed reproduction occur. Up to 12,000 fruits can be produced by each plant which are then eaten by birds and other animals which can spread the seeds over large distances, facilitating the spread of *Lantana camara*.³ It has become a significant weed in Sri Lanka after escaping from the Royal Botanic gardens in 1926.^{4,5} In contrast, in countries with large areas of intact primary forest, the distribution of *Lantana camara* has been limited⁶

Phytochemical investigation of *Lantana camara* showed the presences of flavones, isoflavones, flavonoids,

* Corresponding author.

E-mail address: firojtamboli143@gmail.com (F. A. Tamboli).

anthocyanins, coumarins, lignans, catechins, isocatechins, alkaloids, tannin, saponins and triterpenoids⁷⁻¹⁰

The aim of the present study was to carry out the phytochemical screening and antibacterial activities of *Lantana camara* plant extracts.

2. Materials and Methods

2.1. Plant collection

The collected fresh plants of *Lantana camara* from Kolhapur region were washed with tap water, air-dried at room temperature for 2-3 weeks at 35-40°C and then reduced to coarse powder.

2.2. Extract preparation

Collected plant material was dried in shade and grounded in a grinder. The dried and powdered plant material was extracted successively with methanol using maceration extraction (as 20 gm in 100 ml) for 48h at a temperature not exceeding the boiling point of the solvent. The aqueous extracts were filtered using Whatman filter paper.¹¹

2.3. Phytochemical screening

All the extracts were screened qualitatively for detection of phytoconstituents using general and specific chemical reagents.¹²

2.4. Evaluation of antibacterial activity

In vitro antimicrobial activity of *Lantana camara* against *Staphylococcus aureus*, *E. coli* & *Pseudomonas aeruginosa* was tested by preparing the Petri plate containing the nutrient agar as culture media and then spread the bacteria on nutrient agar media, that Each concentration was poured by making the veals into Petri plates. Three replicates were made for each treatment. Then zone of inhibition around the application point was measured after 24hrs.¹²

2.5. Culture media

Nutrient agar, Nutrient broth were used throughout the study. The plant material was cleaned and decontaminated with ethylene oxide and irradiated.¹²

2.6. Micro-organisms used

Escherichia coli, *Staphylococcus aureus*, and *Pseudomonas aeruginosa*

3. Results

All the extracts were screened qualitatively for detection of phytoconstituents using general and specific chemical reagents as per the following

Table 1: Phytochemical screening of extracts of *Lantana camara*

Sr. No.	Phytochemical tests	Lanata camara leaves
1	Tannins	+ve
2	Phlobtannins	-ve
3	Saponins	+ve
4	Flavonoid	-ve
5	Terpenoid	+ve
6	Glycoside	+ve
7	Alkaloid	+ve
8	coumarin	-ve

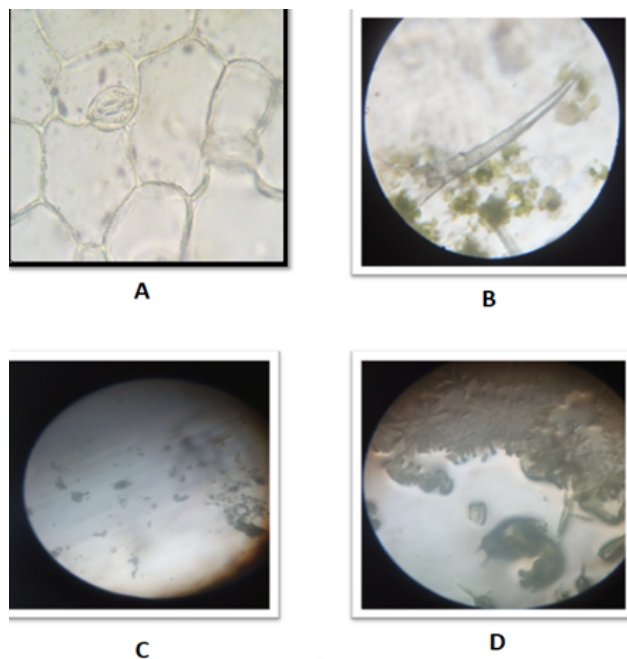


Fig. 1: Powder characters of *Lantana camara* A: Stomata B: Trichome C: Calcium oxalate crystals D: Spiral vessels

Table 2: Stomatal no. and stomatal index *Lanata camara*

Part used	Stomatal No.	Epidermal cell	Stomatal index
Epidermis	22	55	28.27
	19	62	23.45
	24	61	28.23
	23	57	28.75
	17	52	24.63

Table 3: Antibacterial Activity of *Lanata camara* extract

Test organisms	Zone of inhibition (mm)
<i>Escherichia coli</i>	18
<i>Pseudomonas aeruginosa</i>	16
<i>Staphylococcus aureus</i>	19

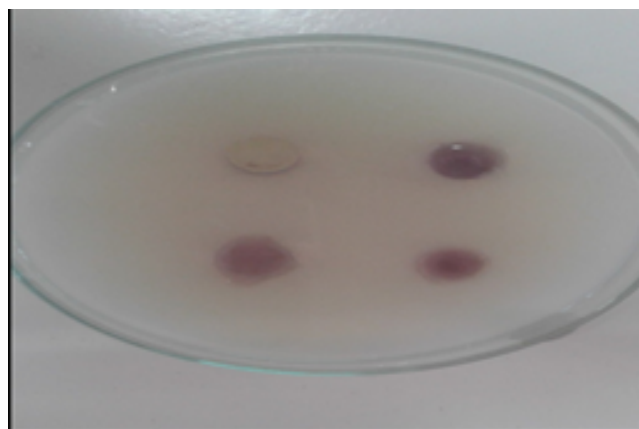


Fig. 2: Antibacterial activity of *Lantana camara* extract

4. Discussion

The leaf surface constants such as stomatal index for upper epidermis was found important diagnostic characters. The antimicrobial activity may be due to the presence of triterpene secondary metabolite in the extract. Therefore, in this project by the use of solvent-extracted leaves extracts of *Lantana camara* containing a highly potential phytochemical which could be characterized and thus, find its way into the arsenal of lucrative antimicrobial drugs study.

5. Conclusion

The phytochemical analysis of *Lantana camara* extracts showed the presence of different secondary metabolites, like alkaloids, phenols, flavonoids, glycosides, tannins and terpenoids. presence of these compounds might be responsible for its antimicrobial activity. The study showed that the solvent extracts investigated were active against various Gram positive and Gram negative bacteria. Alcoholic extract of *Lantana camara* leaves exhibited stronger antimicrobial activity. Among the set of test bacterial strains alcoholic extract of the test plant inhibited the growth of *Staphylococcus aureus* to the maximum.

6. Source of Funding

None.

7. Conflict of Interest

None.

References

- Ghisalberti EL, Camara LL. *Lantana camara* L. (Verbenaceae). *Fitoterapia*. 2000;71(5):467–86. doi:10.1016/s0367-326x(00)00202-1.
- Thakur ML, Ahmad M, Thakur RK. *Lantana* weed (*Lantana camara* var. *aculeata* Linn) and its possible management through natural insect pests in India. *Indian Forester*. 1992;118(7):466–88.
- Zoubiri S, Baaliouamer A. GC and GC/MS analyses of the Algerian *Lantana camara* leaf essential oil: Effect against *Sitophilus granarius* adults. *J Saudi Chem Soc*. 2011;16(3):291–7. doi:10.1016/j.jscs.2011.01.013.
- Bevilacqua AHV, Suffredini IB, Romoff P, Lago JHG, Bernardi M. Toxicity of apolar and Polar *Lantana camara* L. crude extracts in mice. *Rese Vet Sci*. 2011;90(1):106–15. doi:10.1016/j.rvsc.2010.05.001.
- Ramzi SC, Vinay K, Stanley R. Robbins pathologic basis of disease.; 1994. p. 86.
- Sam D, Khan S. Biochemical compositions and antibacterial activities of *Lantana camara* plants with yellow lavender, red and white flowers. *Eurasia J Biol Sci*. 2009;3:69–77. doi:10.5053/ejobios.2009.3.0.10.
- Saraf A, Quereshi S, Sharma K, Khan NA. Antimicrobial activity of *Lantana camara* L. *Indian J Exp Sci*. 2011;2(10):50–4.
- Singh P, Srivastava D. Biofungicides or biocontrol activity of *Lantana camara* against phytopathogenic *Alternaria alternata*. *Int J Pharm Sci Res*. 2012;3(12):4818–21.
- Jancyrani J, Chandramohan G, Ravikumar S. Terpenes and antimicrobial activity from *Lantana camara* leaves. *Res J Recent Sci*. 2014;3(9):52–5.
- Tamboli AF, More HN. Evaluation of Anti ulcer and Antioxidant activity of *Barleria gibsoni* Dalz. *Pharmacogn Res*. 2016;8(4):226–30. doi:10.4103/0974-8490.188879.
- Tamboli FA, More H. Pharmacognostic and Physicochemical analysis of *Barleria gibsoni* Dalz. *Pharmacophore*. 2016;7(2):118–23.
- Hedberg I, Hedberg O, Madati PJ, Mshigeni KE, Mshiu EN, Samuelsson G. Inventory of plants used in traditional medicine in tanzania. Part III. Plants of the families papilionaceaevitaceae. *J Ethnopharmacol*. 1983;9(2):237–60. doi:10.1016/0378-8741(83)90034-x.

Author biography

Vishal H. Thorat, Assistant Professor

Firoj A. Tamboli, Head of Pharmacognosy Department

Asha S. Jadhav, Assistant Professor

Rohankumar Chavan, Assistant Professor

Cite this article: Thorat VH, Tamboli FA, Jadhav AS, Chavan R. Phytochemical analysis and antimicrobial activity of *Lantana camara*. *Int J Pharm Chem Anal* 2021;8(4):171-173.