

Content available at: <https://www.ipinnovative.com/open-access-journals>

IP Journal of Diagnostic Pathology and Oncology

Journal homepage: <https://www.jpdp.oj/>

## Original Research Article

# Immunoexpression of cyclin d1 in head and neck squamous cell carcinomas – Correlation with histopathological grade and clinical parameters

P Sakthidasan Chinnathambi<sup>1,\*</sup>, Deepak Kumar B<sup>2</sup>

<sup>1</sup>Dept. of Pathology, ESIC Medical College, Hyderabad, Telangana, India

<sup>2</sup>Dept. of Pathology, ESIC Medical college & PGIMSR, Bangalore, Karnataka, India



## ARTICLE INFO

## Article history:

Received 30-04-2021

Accepted 12-05-2021

Available online 14-06-2021

## Keywords:

Head and Neck

Squamous cell carcinoma

Histopathological grade

Immunohistochemistry

Cyclin D1.

## ABSTRACT

Squamous cell carcinomas constitute 95% of cancers of the head and neck region. The progression of disease in these patients depends on various molecular regulators. The present study is undertaken to identify the immunoexpression of Cyclin D1 in Head and Neck Squamous Cell Carcinomas (HNSCC) and to study their association with clinicopathological variables in routine diagnostics.

**Objectives:** 1. To study the expression of Cyclin D1 in Head and Neck Squamous Cell Carcinomas by immunohistochemistry. 2. To correlate the expression of Cyclin D1 with histopathological grading and various demographic parameters.

**Materials and Methods:** 150 cases of HNSCCs were studied for a period of 18 months in ESIC MC & PGIMSR, Bangalore. The cases were subjected to immunohistochemical analysis of Cyclin D1 antigen. Immunoexpression of Cyclin D1 was correlated with histopathological differentiation and clinical parameters.

**Results:** Out of 150 cases; well, moderate and poorly differentiated grades constituted 67, 63 and 20 cases respectively. Immunoexpression of Cyclin D1 was found in 100 % of the cases and they were significantly associated with worsening grade of the tumour and positive lymph node disease while it was not found to be associated with other clinical parameters.

**Conclusion:** Immunohistochemical analysis of cyclin D1 can be routinely done in HNSCC as it proves to be an effective, early prognostic indicator in predicting the advanced stage of the disease and guiding appropriate management.

© This is an open access article distributed under the terms of the Creative Commons Attribution License (<https://creativecommons.org/licenses/by/4.0/>) which permits unrestricted use, distribution, and reproduction in any medium, provided the original author and source are credited.

## 1. Introduction

Among the various types of cancers affecting the body, some of them are caused by environmental stimuli and life style practices, which can be modified to halt their progression or to prevent their occurrence. One among them is Squamous cell carcinoma (SCC) which occurs most commonly due to life style habits such as smoking and betel nut chewing.<sup>1,2</sup> SCCs can arise in various sites such as uterine cervix, oesophagus, anal canal and head and neck region.<sup>3-7</sup> SCCs of Head and Neck region (HNSCCs) constitute the 6<sup>th</sup> leading cancer

in the world, accounting for a huge burden of cancer associated deaths worldwide. This necessitates the study of HNSCCs and their associated risk factors, so that the morbidity and mortality can be curtailed. The advent of increasing evidence based therapy in medicine today aided by advancing research in molecular pathogenesis of cancers has led us to a new era of targeted chemotherapy for the cancers.<sup>8</sup> Recently, various studies are identifying novel markers representing molecular pathways in Squamous cell carcinomas of the head and neck region.<sup>8-10</sup> Among them, the over expression of Cyclin D1, a cell cycle regulator, is documented in the HNSCCs.<sup>1</sup> Cyclin D1 correlates well with other pathological parameters in the prognostication of HNSCCs.<sup>11-14</sup> Hence this study is conducted on HNSCCs

\* Corresponding author.

E-mail address: [sakthidasanmbbs@gmail.com](mailto:sakthidasanmbbs@gmail.com) (P. S. Chinnathambi).

to study the immunopositivity of Cyclin D1 and to correlate its expression pattern with various clinico-pathological parameters to guide the management and prognostication of these patients.

## 2. Aims & Objectives

1. To study the expression of Cyclin D1 in Head and Neck Squamous Cell Carcinomas by immunohistochemistry.
2. To correlate the expression of Cyclin D1 with histopathological grading and other variables such as gender, age, anatomical site, smoking history, alcohol consumption history and stage of cancer (wherever available).

## 3. Materials and Methods

The present study was conducted in the Department of Pathology, in a tertiary care institute at Bangalore, India. It was a retro-prospective study from the period of January 2012 to April 2015 comprising of samples from 150 patients. Institutional ethical clearance was obtained prior to the commencement of the study.

### 3.1. Inclusion criteria

All cases diagnosed as primary squamous cell carcinoma on routine biopsy of head and neck lesions irrespective of age and gender of patient.

### 3.2. Exclusion criteria

Head and neck lesions diagnosed as carcinoma in situ and those cases of squamous cell carcinoma deposits in Lymph nodes of Head and Neck region were excluded from study.

### 3.3. Sample collection

Biopsy and tissue samples of patients submitted for histopathological examination, diagnosed as Squamous cell carcinomas of the Head and Neck region were evaluated. Paraffin embedded samples which were diagnosed as HNSCCs and their corresponding Haematoxylin and Eosin stained sections were retrieved from the archives of pathology department were used for retrospective analysis.

### 3.4. Sample processing

Biopsies and tissue samples were fixed in 10% Neutral buffered formalin solution for an average period of 24 hours followed by processing using an automated histokinette and an automated microtome. Sections were preliminarily stained by routine Haematoxylin and Eosin (H&E) stain and graded according to descriptive Broder's criteria as well differentiated, moderately differentiated and poorly differentiated tumours. Immunohistochemical (IHC) staining for Cyclin D1 was carried out by

peroxidase-antiperoxidase method. Monoclonal antibodies were obtained from Biogenex and Scytek laboratories. Diaminobenzidine (DAB) was used as chromogen. Staining in the basal and suprabasal layer of the normal stratified squamous epithelium in the sections were taken as positive control. Negative control was taken by staining those sections by omitting the primary antibodies. Labelling index percent for Cyclin D1 [Positivity Index -PoI] was calculated by reporting the number of positive cells (nuclei) to the total number of cells (positive and negative), with the result expressed in percentage. A minimum of 500 cells were counted under 40X objective (High power objective). For the immunoquantification of Cyclin D, a semi quantitative evaluation system consisting of three levels: <10%, 10-50%, and >50% was used. The histological grade on the H&E sections and the expression of Cyclin D1 were correlated along with other clinical parameters.

### 3.5. Statistical analysis

Descriptive statistical analysis such as mean, median, proportion was calculated using Microsoft excel. Chi-square test of independence and goodness of fit was employed to determine the probability (p) value. A p value of < 0.05 was considered as statistically significant.

## 4. Results

All 150 cases were studied histopathologically, evaluated for immunoeexpression of Cyclin D1 and correlated with clinical parameters. The age of patients ranged from 25 to 83 years with a mean age of 56 years. Maximum number of cases were seen in the age group of 51 to 60 years (32%). Considering distribution of cases with respect to gender, 108(72%) cases were males and 42 (28%) were females. Male to female ratio was 2.6:1. One hundred and four cases had a history of smoking, accounting for 69.3% of total number of cases with all of them being males (100%). Among the category of non-smokers (46 cases, 31%), 4 were males and 42 were females. Of the 104 cases that had a history of smoking, maximum number of patients (46 cases, 44%) had a history of smoking for a period of 21 to 30 years. Twenty percent of patients had a history of smoking for more than 30 years. One hundred cases (66.6%) gave a positive history of alcohol consumption, all of them were males. Of the non-alcoholics, 81% of them constituted females. Eighty-eight cases had a positive history of tobacco chewing accounting for 58.6% of cases and there was an almost equal distribution between both the genders. Table 1. (Distribution of cases with respect to Demographic variables).

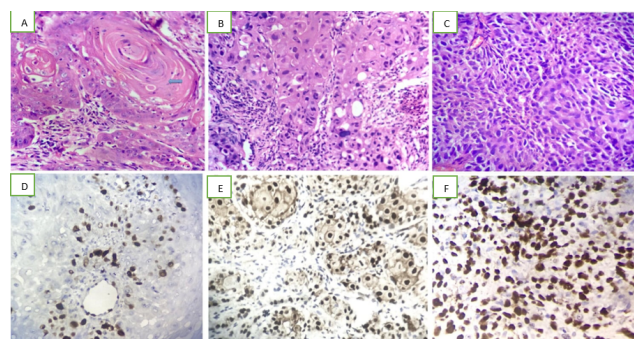
Majority of the cases (59 cases, 39.3%) were seen in the oral cavity, with buccal mucosa (33.8%) being the commonest site, followed by the tongue (30.5%). Among 30.6% of pharyngeal Squamous cell carcinoma,

the pyriform fossa was found to be the most commonly involved site (39.1%). Supraglottic SCC was the most frequently encountered laryngeal SCC (40%). Laterality was not considered in the assessment of site as laterality is not applicable in most of these unpaired organs of head and neck region. Table 2: Site distribution of HNSCCs.

Well-differentiated type was the predominant histologic grade accounting for 67 cases (45%), followed closely by moderately differentiated type (63 cases, 42%) and then by poorly differentiated type (20 cases, 13%). Immunopositivity of Cyclin D1 in >50% of tumour cells was seen in a majority of 67 cases (44.7%), followed by 45 cases (30%) showing  $\leq 10\%$  immunostained cells. The remaining 38 cases (25.3%) showed intermediate score of 11-50% of immunopositivity. Out of 67 well differentiated Squamous cell carcinomas, majority [30 cases (44.7%)] of cases showed Cyclin D1 positivity index of  $\leq 10\%$ . Among moderately differentiated type, 33 cases (52.3%) showed Cyclin D1 positivity index of > 50%. Eighty-five percent (17 out of 20 cases) of poorly differentiated type of Squamous cell carcinoma showed Cyclin D1 positivity index of > 50%. The correlation of Cyclin D1 immunorexpression was found to be statistically significant with respect to the various histopathological grades of HNSCC ( $p < 0.001$ ). There was no significant association between immunorexpression of Cyclin D1 and age, gender, history of smoking, the duration of smoking, alcohol consumption and tobacco chewing. There was no significant differing immunorexpression of Cyclin D1 in the various major anatomical sites of HNSCC. The positivity index was found to be distributed similarly in different anatomical sites. In only twenty-six of the 150 study cases, radical neck dissection was performed. Of these 19 cases (73%) showed metastatic deposits in the lymph nodes. The study of Cyclin D1 immunorexpression in these 19 cases showed a majority of them i.e., 13 cases (68.6%) with > 50% immunoreactive cells. The increasing immunorexpression of Cyclin D1 in lymph node positive HNSCC was found to be statistically significant ( $p = 0.005$ ). Of the 26 cases in which pathological staging could be assessed, immunopositivity of cyclin D1 was found not to be significantly associated with any of the stages ( $p = 0.222$ ). Table 3: Correlation of Cyclin D1 with respect to various parameters.



**Fig. 1:** Gross photograph of Squamous cell carcinoma of Lip, **B:** Gross photograph of Squamous cell carcinoma of Right Cheek



**Fig. 2:** Microphotograph showing keratin pearls in well differentiated squamous cell carcinoma [H&E 10x10]; **B:** Microphotograph showing moderately differentiated squamous cell carcinoma (H&E-10x40); **C:** Microphotograph showing poorly differentiated squamous cell carcinoma (H&E-10x40); **D:** Microphotograph showing nuclear immuno-expression of Cyclin D1 in well differentiated squamous cell carcinoma (score < 10%) (IHC, 10x40); **E:** Microphotograph showing nuclear immuno-expression of Cyclin D1 in moderately differentiated squamous cell carcinoma (score 45%) (IHC, 10x40); **F:** Microphotograph showing nuclear immuno-expression of Cyclin D1 in poorly differentiated squamous cell carcinoma (score-85%)(IHC, 10x40)

## 5. Discussion

The mean age of patients including both men and women in our study of 150 cases was found to be 56 years. This is well comparable with other studies as shown by Vicente et al who found that the mean patient age was 56.6 years and Yu et al whose patients had a mean age of 61.5 years.<sup>13,15</sup> The present study found no significant correlation of Cyclin D1 [ $p = 0.924$ ] expression with age. This is supported by the findings from other studies such as Zhang et al.<sup>16</sup> [Cyclin D1 ( $p = 0.559$ )]. Various studies conducted by researchers show significant increase in HNSCC in male gender, a similar male preponderance was seen in present study too and there was no significant correlation of Cyclin D1 ( $p = 0.348$ ) with Gender. This is in concordance with authors like Vicente et al and Zhang et al.<sup>13,16</sup>

Authors like Zhang et al and Huang et al who have studied large number of cases have established that majority of their cases had a positive smoking history.<sup>16,17</sup> Likewise, 69.3% of our cases also proved to be smokers with a long and continuous smoking history. Various authors such as Vicente et al and Zhang et al found no significant association of Cyclin D1 with smoking history. The present study is in agreement with these findings with no significant association of Cyclin D1 [ $p = 0.277$ ] with smoking history. Studies conducted by various authors indicate that alcohol consumption plays a contributory role in the etio-pathogenesis of HNSCC. Kaminagakura et al studied 90 cases and found that 67.7% of them had a significant alcohol consumption history.<sup>18</sup> The present study also found that two thirds of its study

**Table 1:** Distribution of cases with respect to Demographic variables

<b>Variables</b>	<b>Number of cases</b>	<b>Percentage</b>	
<b>Age Distribution</b>	21-30	3	2
	31-40	16	10.66
	41-50	30	20
	51-60	48	32
	61-70	44	29.33
	71-80	8	5.33
	81-90	1	0.66
<b>Gender distribution</b>	Male	108	72
	Female	42	28
<b>Smoking history</b>	Smokers	104	69
	Non-smokers	46	31
<b>Duration of smoking in years</b>	0-10	12	11.5
	11-20	24	11.9
	21-30	46	44.2
	31-40	20	19.2
<b>Alcohol consumption history</b>	41-50	2	1.9
	Yes	100	66.6
	No	50	33.3
<b>History of tobacco chewing</b>	Yes	88	58.6
	No	62	41.3

**Table 2:** Site distribution of HNSCCs

<b>Sites and regions of squamous cell carcinoma in Head and Neck</b>	<b>Number</b>	<b>Males</b>	<b>Females</b>		
LARYNX (n=35) -23.30%	Epiglottis	3 [2]	2	1	
	Aryepiglottic fold	1 [0.6]	1	0	
	Supraglottis	14 [9.3]	12	2	
	True Vocal cord	12 [8]	11	1	
	False vocalcord	1 [0.6]	1	0	
	Glottis	2 [1.3]	2	0	
	Cricoid	1 [0.6]	1	0	
	Post cricoid	1 [0.6]	0	1	
Pharynx (n=46) -30.60%	Tonsil	11 [7.3]	9	2	
	Oropharynx Posterior pharyngeal wall	10 [6.6]	9	1	
	laryngopharynx	Pyriform fossa	18[12]	17	1
		vallecula	7 [4.6]	7	0
	Tongue	18[11]	12	6	
Oral cavity (n=59) -39.30%	Base of tongue	4 [2.6]	4	0	
	Buccal mucosa	20 [13.3]	6	14	
	Floor of mouth	3 [2]	2	1	
	Hard palate	1 [0.6]	1	0	
	Soft palate	5 [3]	5	0	
	Gingiva	1 [0.6]	0	1	
	Gingivobuccal sulcus	4 [2.6]	1	3	
Lip	Retromolar trigone	3 [2]	2	1	
		1 [0.6]	1	0	
Cheek		3 [2]	0	3	
	Nasal cavity	1 [0.6]	0	1	
External ear	Pinna	1 [0.6]	1	0	
	External auditory canal	1 [0.6]	0	1	
scalp		2 [1.3]	1	1	
Other areas –submandibular region		1 [0.6]	0	1	
<b>Total</b>	<b>150[100]</b>	<b>108</b>	<b>42</b>		

**Table 3:** Correlation of Cyclin D1 with respect to various parameters

Variables	Cyclin D1 expression			p value	
	≤10%	11-50%	>50%		
(differentiation pattern) Grades of scc	Well Differentiated	30 (44.7%)	20 (29.8%)	17 (25.5%)	<0.001
	Moderately differentiated	13 (20.6%)	17 (26.9%)	33 (52.3%)	
	Poorly Differentiated	2 (5%)	1 (10%)	17 (85%)	
Age	<50years (n=49)	11 (22.5%)	13 (26.5%)	25 (51.0%)	0.924
	>50 years (n=101)	21 (20.8%)	25 (24.8%)	55 (54.4%)	
Gender	Male (n=108)	26 (24.1%)	25 (23.1%)	57 (52.85)	0.348
	Female (n=42)	6 (14.2%)	13 (31%)	23 (54.8%)	
Smoking history	Yes (n=104)	25 (24%)	23 (22.1%)	56 (53.9%)	0.277
	No (n=46)	7 (15.2%)	15(32.6%)	24 (52.2%)	
Duration of smoking	<20 years (n=36)	12 (33.3%)	3 (8.3%)	21 (58.3%)	0.085
	>20 years (n=68)	20(29.4%)	18 (26.4%)	30 (44.2%)	
Alcohol consumption	Yes (n=100)	23 (23%)	22 (22%)	55 (55%)	0.393
	No (n=50)	9(18%)	16 (32%)	25 (50%)	
Tobacco chewing	Yes (n=88)	18 (20.5%)	25 (28.4%)	45 (51.1%)	0.587
	No (n=62)	14 (22.6)	13 (21.0%)	35 (56.4%)	
Anatomic site	Oral cavity (n=59)	11 (18.7%)	19 (32.2%)	29 (49.1%)	0.336
	Pharynx(n=46)	7 (15.3%)	10 (21.7%)	29 (63%)	
	Larynx(n=35)	10 (28.6%)	7 (20%)	18 (51.4%)	
Stage(n=26)	Stage I (n=3)	2 (67%)	0	1(33%)	0.222
	Stage II (n=3)	0	0	3(100%)	
	Stage III(n=9)	3(33%)	2(22.2%)	4(44.4%)	
	Stage IV (n=11)	1(9%)	1(9%)	9(82%)	

patients (67%) admitted to having a significant history of alcohol consumption but found no significant correlation of Cyclin D1 ( $p=0.393$ ) with alcohol consumption history in concordance with the findings of Vicente et al and Zhang et al.<sup>13,16</sup> The present study highlights that 58.6% of the cases had a positive history of tobacco chewing in concordance with other authors.

The major anatomical sites in the head and neck region affected by SCC are the oral cavity, pharynx and the larynx, followed by other sites like skin of external ear, scalp and the nasal region. Michalides et al, who studied all the head and neck SCCs found the hypopharynx to be most frequently involved site.<sup>19</sup> Ashraf et al found the glottic region to be the most often affected in the laryngeal SCCs.<sup>20</sup> The present study which included 150 cases of HNSCCs involving all the major anatomical sites found that majority of cases (39.3%) clustered in the oral cavity, followed by the pharynx and lastly by the larynx. However, present study found no significant correlation of Cyclin D1 with major anatomical sites. This is supported by the findings from other studies too such as Vicente et al, Zhang et al and Raju et al.<sup>13,16,21</sup>

Histopathological grade has proved to be of independent prognostic value.<sup>3</sup> The studies conducted by various authors have used modified Broder's Grading system which sub-classifies SCC into well differentiated, moderately differentiated and poorly differentiated tumour grades.<sup>11,13,18,20,22</sup> Different studies conducted among patients from variable geographic areas show differing distribution of tumour grades. The present

study found a majority of cases (45%) showing a well differentiation pattern, and the least number of cases (13%) to be poorly differentiated. This is in agreement with Vicente et al, Ashraf et al, Satya Das et al, and Choudhary et al.<sup>13,20,22,23</sup> As evidenced by the various international studies conducted by the above authors, increasing Cyclin D1 immunorexpression is seen in increasing tumour grade. Similar patterns are also observed in the present study with 85% of poorly differentiated tumours showing Cyclin D1 over-expression.

Huang et al studied 264 SCCs and found that Cyclin D1 overexpression was significantly associated with regional lymph node metastasis ( $p=0.002$ ).<sup>17</sup> In the present study, of the 19 cases which showed regional lymph node metastasis, 68.6% of the cases showed over expression of Cyclin D1. This increasing immunorexpression of Cyclin D1 in cases presenting with nodal metastasis was found to be statistically significant. Cyclin D1 over expression did not correlate well with tumour stage. This is in contrast with the studies done by other authors who obtained positive correlation of Cyclin D1 with respect to advanced tumour stage.<sup>14,16,24</sup>

## 6. Conclusion

The immunorexpression of Cyclin D1 is found to be increasingly present in poorer grades of tumour differentiation and in metastatic lymph node deposits. Hence "Cyclin D1 immunorexpression can prove to be

of tremendous beneficial value in the early assessment of neoplastic behaviour in head and neck squamous cell carcinomas and may serve as an independent prognostic marker with therapeutic implications.”

## 7. Source of Funding

No financial support was received for the work within this manuscript.

## 8. Conflicts of Interest

There are no conflicts of interest.

## References

1. Kumar V, Abbas AK, Aster JC. Robbins and Cotran Pathologic Basis of Disease. In: 9th Edn. Philadelphia: Saunders; 2015.
2. Damjanov I, Linder J. Anderson's Pathology. In: 10th Edn. United States: Mosby; 1996.
3. Rosai J. Rosai and Ackerman's Surgical Pathology. Philadelphia: Mosby. 2011;
4. Fletcher C. Diagnostic histopathology of tumours. Philadelphia: Saunders. 2013.;
5. Mills SE, Greenon JK, Hornick JL, Longacre TA, Reuter VE. Sternberg's Diagnostic Surgical Pathology. In: 6th Edn. Philadelphia: Wolters Kluwer/Lippincott Williams & Wilkins; 2015.
6. Barnes L, Eveson JW, Reichart P, Sidransky D. World Health Organization Classification of Tumours. Pathology and Genetics of Head and Neck Tumours. Lyon: IARC Press; 2005.
7. Allen DC. Histopathology Reporting Guidelines for Surgical Cancer. In: 2nd Edn. London: Springer; 2006.
8. Vigneshwaran N, Williams MD. Epidemiological Trends in Head and Neck Cancer and Aids in Diagnosis. *Oral Maxillofac Surg Clin North Am.* 2014;26(2):123–41.
9. Mishra A, Meherotra R. Head and Neck Cancer: Global Burden and Regional Trends in India. *Asian Pac J Cancer Prev.* 2014;15(2):537–50. doi:10.7314/apjcp.2014.15.2.537.
10. Sturgis EM, Wei Q, Spitz MR. Descriptive epidemiology and risk factors for head and neck cancer. *Semin Oncol.* 2004;31(6):726–33. doi:10.1053/j.seminoncol.2004.09.013.
11. Olimid DA, Simonescu CE, Margaritescu CL, Florescu A. Immunoexpression of Ki67 and cyclin D1 in oral squamous carcinomas. *Rom J Morphol Embryol.* 2012;53:795–8.
12. Angadi PV, Krishnapillai R. Cyclin D1 expression in oral squamous cell carcinoma and verrucous carcinoma: correlation with histological differentiation. *Oral Surg Oral Med Oral Pathol Oral Radiol Endod.* 2007;103:e30–5. doi:10.1016/j.tripleo.2006.09.011.
13. Vicente J, Zapatero A, Fresno M, Arranz J. Expression of cyclin D1 and Ki-67 in squamous cell carcinoma of the oral cavity: clinicopathological and prognostic significance. *Oral Oncol.* 2002;38(3):301–8. doi:10.1016/s1368-8375(01)00060-4.
14. Ioachim E, Peschos D, Goussia A, Mittari E, Charalabopoulos K, Michael M, et al. Expression Patterns of Cyclin D1, E in Laryngeal Epithelial Lesions: Correlation with other Cell Cycle Regulators (p53, p Rb, Ki 67, PCNA) and Clinicopathological features. *J Exp Clin Cancer Res.* 2004;23(2):277–83.
15. Yu Z, Weinberger PM, Haffty BG, Sasaki C, Zerillo C, Joe J, et al. Cyclin D1 Is a Valuable Prognostic Marker in Oropharyngeal Squamous Cell Carcinoma. *Clin Cancer Res.* 2005;11:1160–6.
16. Zhang YY, Xu ZN, Wang JX, Wei DM, Pan XL. G1/S-specific Cyclin D1, Might be a Prognostic Biomarker for Patients with Laryngeal Squamous Cell Carcinoma. *Asian Pac J Cancer Prev.* 2012;13:2133–7.
17. Huang SF, Cheng SD, Chuang WY, Chen IH, Laio CT, Wang HM, et al. Cyclin D1 overexpression and poor clinical outcomes in Taiwanese oral cavity squamous cell carcinoma. *World J Surg oncol.* 2012;10:40.
18. Kaminagakura E, da Cunha I, Soares FA, Nishimoto IN, Kowalski LP. CCND1 amplification and protein overexpression in oral squamous cell carcinoma of young patients. *Head Neck.* 2011;33(10):1413–9. doi:10.1002/hed.21618.
19. Michalides R, Veelen NV, Hart A, Loftus B, Wientjens E, Balm A, et al. Over expression of Cyclin D1 correlates with Recurrence in a Group of Forty seven Operable squamous cell carcinomas of the Head and Neck. *Cancer Res.* 1995;55:975–8.
20. Azarpira N, Khademi B, Ashraf MJ, Maghbul M. Expression of Ki67 and P53 in primary squamous cell carcinoma of the larynx. *Indian J Pathol Microbiol.* 2010;53(4):661–5. doi:10.4103/0377-4929.72019.
21. Raju B, Mehotra R, Ojordsbakken G, Al-Sharabi AK, Vasstrand EN, Ibrahim SO, et al. Expression of p53, Cyclin D1 and Ki67 in Pre-malignant and Malignant Oral Lesions: Association with Clinicopathological Parameters. *Anticancer Res.* 2005;25:4699–706.
22. Das SN, Khare P, Singh MK, Sharma SC. Correlation of Cyclin D1 expression with aggressive DNA pattern in patients with tobacco-related intraoral squamous cell carcinoma. *Indian J Med Res.* 2011;133:381–6.
23. Kesarwani P, Choudhary A, Gaikwad P, Hiremath SS, Gupta R, Koppula SK, et al. Expression of cyclin D1 in oral squamous cell carcinoma and its correlation with histological differentiation: An immunohistochemical study. *J Indian Acad Oral Med Radiol.* 2016;28(2):140–4. doi:10.4103/0972-1363.195099.
24. Dhingra V, Verma J, Misra V, Srivastava S, Hasan F. Evaluation of Cyclin D1 Expression in Head and Neck Squamous Cell Carcinoma. *J Clin Diagn Res.* 2017;11(2):1–04.

## Author biography

**P Sakthidasan Chinnathambi**, Assistant Professor

**Deepak Kumar B**, Professor

**Cite this article:** Chinnathambi PS, Kumar B D. Immunoexpression of cyclin d1 in head and neck squamous cell carcinomas – Correlation with histopathological grade and clinical parameters. *IP J Diagn Pathol Oncol* 2021;6(2):99-104.