



Original Research Article

Role of p53 as a prognostic marker in breast carcinoma and its correlation with tumor size, tumor grade and lymph node metastasis

Bharat Jindal¹, Rajender Kumar Thakral¹, Alok Mohan^{1,*}, Vaseem Ansari¹,
Veena K Sharma¹

¹Dept. of Pathology, Muzaffarnagar Medical College, Muzaffarnagar, Uttar Pradesh, India



ARTICLE INFO

Article history:

Received 19-02-2020

Accepted 20-02-2020

Available online 19-08-2020

Keywords:

Breast cancer

Invasive carcinoma

Lymph node

p53 overexpression

Immuno-histochemistry.

ABSTRACT

Introduction: Breast cancer is the most frequently diagnosed cancer among females worldwide. p53 tumor suppressor gene regulates the cell cycle and DNA repair and its over-expression in breast cancer is associated with a worse prognosis.

Objective: This study was done to correlate p53 over-expression with histopathological parameters such as tumor size, tumor grade and lymph node metastasis in breast carcinoma.

Materials and Methods: This retrospective study was conducted in a tertiary care centre, western U.P. retrospectively from July 2014 to June 2019. Immuno-histochemical evaluation of 50 histologically confirmed cases of breast carcinoma was done.

Results: A total of 50 patients of breast carcinoma were analysed. Most common was Invasive carcinoma of no special type (NST). Most common age group involved was 40-49 years and majority were of age more than 45 years of age. Majority of breast carcinoma cases were of left breast and involving upper outer quadrant. In majority of cases, the tumor size was of more than 2 to 5cms. Majority of cases of breast carcinoma were of grade II according to Nottingham Modified Bloom Richardson System. More than half of patients with lymph nodes showed metastatic deposits. Majority of cases were in moderate prognostic index group. Out of 50 cases, 24(48%) cases showed p53 expression ($\geq 5\%$). High p53 expression ($>50\%$) was seen in 8(16%) cases of breast carcinoma.

Conclusion: A statistically significant association was found between p53 expression, tumor size and lymph node metastasis. No statistically significant association was found between p53 overexpression and tumor grade. Overall, p53 overexpression was found to be poor prognostic factor and its detection may help in risk categorization and designing future target therapies.

© 2020 Published by Innovative Publication. This is an open access article under the CC BY-NC license (<https://creativecommons.org/licenses/by-nc/4.0/>)

1. Introduction

Breast cancer is the most frequently diagnosed cancer and the leading cause of cancer death among females worldwide, with an estimated 2.08 million cases and 626679 deaths in 2018.¹ Cases are generally high in American and European countries while low in most of Africa and Asia.² The international variation in incidence rates is mainly due to reproductive and hormonal factors and early detection.³ Breast cancer projection for India during time periods 2020 suggests the number to go as high as 1797900.⁴

Early diagnosis and appropriate treatment can prolong the survival of patient diagnosed with breast cancer.⁵ The number of cancer-related parameters available to predict the prognosis in breast cancer patients has grown considerably in recent years. Prognostic factors of breast cancer include histological features (histological type, histological grade, lymphovascular invasion), tumor size, lymph node status, steroid hormone receptors status and age.⁶⁻⁸ Prognostic and predictive biomarkers including p53 was also identified in breast cancer.

p53 tumor suppressor gene is the most frequently mutated tumor suppressor gene in human malignancy and

* Corresponding author.

E-mail address: dr.alokmohansinha@gmail.com (A. Mohan).

30% breast cancers have p53 mutation.⁹ p53 (also known as TP53) is located on chromosome 17p13 and encodes p53 transcription factor. p53 plays a vital role in determining cell fate exposed to DNA damage stimuli.¹⁰ In response to DNA damage, p53 activates p21 and arrests the cells in G₁ phase—this constitutes the major G₁/S checkpoint. Induction of p53 can also lead to apoptosis by activating pro-apoptotic proteins such as BAX, PUMA, and NOXA.¹¹

Unlike normal p53, nonfunctional mutated p53 accumulates in the nucleus of tumor cells, and therefore, it can be detected by immunohistochemical analysis. Multiple studies have shown that p53 over expression in breast cancer is associated with a worse prognosis.¹²

So, aim of this study is to find out role of p53 over-expression in breast carcinoma and its correlation various histological parameters such histological type, tumor grade and lymph node metastasis.

2. Materials and Methods

The present study was conducted in a tertiary care centre, western U.P. retrospectively from July 2014 to June 2019. Immuno-histochemical evaluation of a total 50 cases was conducted who were confirmed to have breast carcinoma histologically. The haematoxylin & eosin (H&E) stained slides of the cases were retrieved & screened for confirmation of diagnosis followed by selection of the appropriate paraffin blocks. The representative neoplastic tissue blocks (paraffin embedded) were cut at 3.0 μ on poly-L-Lysine coated slides. One of the sections was routinely stained with H&E. The histological grading of the tumor was done on H&E stained sections according to Modified Bloom & Richardson Grading.

Out of 50 patients, 36 patients were of modified radical mastectomy and 14 patients were of lumpectomy. Patient without consent for IHC, inadequate tissue samples, improperly preserved tissues were excluded. Breast carcinoma was used as a positive control. Tumor cells with nuclear staining were accepted as positive. p53 overexpression were taken as Negative, Low, Moderate, High when less than 5%, 5%- 19%, 20% - 50%, >50% of cells were positive for p53. Tumor size was divided into three groups < 20mm, 20 mm– 50mm, >50mm on gross examination.

Descriptive statistical analysis has been carried out in the present study. Chi square test was applied using SPSS version 2.0, p value <0.05 was considered as the minimum level of significance.

3. Results

In present study, age range of these patients were from 20 to 90 years with mean age 49.5 years. Majority of patients (16/50,32%) were in the age group of 40-49 years. Women of age more than 45 years of age

were 32/50(64%). Out of 50 cases, 28(56%) were on the left side and 24(44%) on the right side and no case was found involving both breast. Majority of cases were in upper outer quadrant (24/50,48%) followed by central quadrant (14/50,28%), lower outer(7/50,14%), upper inner(3/50,6%) and lower inner(2/50,4%). Tumor size ranges from 1.5 cm to 15 cm and majority of breast tumors (29/50,58%) were of size >2 cm to 5 cm followed by (15/50,30%) tumors with size >5 cms and least (6/50,12%) were tumor of size \leq 2.0 cm. In the present study, invasive (infiltrating) carcinoma of no special type was the commonest histological type (41/50,82%) followed by invasive lobular carcinoma (4/50,8%), invasive carcinoma with neuroendocrine differentiation (2/50,4%), metaplastic carcinoma (2/50,4%) and mucinous carcinoma (1/50,2%). All the cases were graded according to Nottingham modification of Bloom Richardson method and majority of the cases were in grade II (21/50,42%) followed by grade I (16/50,32%) and grade III (13/50,26%). According to Nottingham prognostic index, majority of patients were in moderate prognostic group (17/36,47.2%) followed by poor prognostic (12/36,33.3%) and good prognostic group (7/36,19.5%). Out of 36 cases with lymph nodes, 20 cases were positive for metastatic deposits (20/36, 55.55%).

In present study, p53 expression (positive, \geq 5%) was seen in (24/50, 48%) cases and rest were negative for p53 expression (Table 1). Maximum p53 positivity (\geq 5%) was seen in invasive breast carcinoma of special type (22/41,53.7%) followed by invasive carcinoma with neuroendocrine differentiation (1/2,50%) and metaplastic carcinoma (1/2,50%). No p53 positivity (<5%) was seen in infiltrating lobular carcinoma and mucinous carcinoma of breast. In cases with tumor size \leq 2cm, p53 expression (>5%) was seen in (3/6,50%) cases. In cases of tumor size of >2-5cm, p53 expression (\geq 5%) was seen in (12/29,41.%) and in tumor size >5 cm, p53 expression(>5%) was seen in (9/15,60%) cases (Table 2). Above results was found to be statistically significant (p=0.008917).

9/13(69.2%) of grade III breast tumors were positive for p53 expression (\geq 5%) followed by grade II breast tumors (10/21,47.6%) and grade I tumors (5/16,31.3%)(Table 3). Above results were found to be statistically insignificant (p value=0.125724). p53 expression was seen maximum in cases with lymph node metastatic deposits (13/20,65%) as compared to lymph node with no metastatic deposits (5/16,31.2%)(Table 4). Above results was found to be statistically significant (p=0.044171).

4. Discussion

Breast cancer, one of the most common malignancy in women and alone accounts for 25% of all cancer cases and 15% of all cancer deaths among females. In India, breast cancer develops almost a decade earlier than their Western counterparts.¹³ Breast cancer is highly

Table 1: p53 expression in cases of breast carcinoma.

p53 expression	Number of cases (n)	Percentage (%)
Negative	26	52
Low positive (5-19%)	02	04
Moderate positive (20-50%)	14	28
High positive (>50%)	08	16
	50	100

Table 2: p53 expression according to tumor size.

Tumor size	Number of patients	P53 expression			
		<5%	5-19%	20-50%	>50%
≤2cm	06	3	0	3	0
2-5cm	29	17	2	5	5
>5cm	15	6	0	6	3
Total	50	26	2	14	8

Value= 0.008917, Statistical significant

Table 3: p53 expression in breast carcinoma according to grade of tumor.

Tumor grade	Number of patients	p53 expression			
		<5%	5-19%	20-50%	>50%
Grade I	16	11	1	3	1
Grade II	21	11	1	5	4
Grade III	13	4	0	6	3
Total	50	26	2	14	8

Value= 0.125724, not significant

Table 4: p53 status in breast carcinoma according to lymph node metastasis

Lymph node metastasis	Number of patients	p53 expression			
		<5%	5-19%	20-50%	>50%
Positive	20	7	1	5	7
Negative	16	11	0	5	0
Total	36	18	1	10	7

Value= 0.044171, Statistical significant

heterogeneous disease with a wide range of biological, pathological & clinical characteristics. Role of hormone receptors such as ER/PR & HER-2/neu is well known in treatment of breast cancer whereas new studies has shown the role of p53 in prognosis and overall survival of patients of breast cancer.

In present study, out of total 50 cases, 36(72%) cases were of modified radical mastectomy with lymph nodes and 14 (28%) cases were of lumpectomy.

In present study, majority of cases (16/50, 32%) were in the age group of 40-49 years. The age range of patients ranged from 20 to 90 years with mean age of 49.5 years which is similar to studies done by Nikhra P et al. (2014)¹⁴ and Yadav R et al. (2016).¹⁵ Women of age less than or equal to 45 years were 18/50(36%) and more than 45 years were 32/50(64%) in present study which is similar to study done by Lodha R et al., 2011.¹⁶ Kakarala et al., 2010¹⁷ in their study found that in Indian population, 16.2% were pre-menopausal, 29.9% were peri-menopausal and 53.9% were post menopausal.

Majority of tumors were on left side 28/50(56%) in comparison to right side 22/50(44%). It has been observed in the past also that breast carcinomas are more common in the left breast than the right. The possible explanations are that the left breast being more bulky and having a larger volume of breast tissue comparatively.^{18,19} Sandhu et al.(2010)²⁰ and Geethamala et al. (2015)²¹ observed the similar findings. The upper outer quadrant, which is the most common site for carcinoma breast according to Sainsbury RC (2004)²² was the most common site for the tumor with 53.03% of the tumors situated in this location and in the present study also, 24/50(48%) cases were found in upper outer quadrant.

In the present study, tumor size ranges from 1.5 cm to 15 cm and majority of breast tumors (29/50,58%) were of size >2 cm to 5 cm followed by 15/50(28%) tumors with size >5 cms and least (6/50, 12%) were tumor of size ≤ 2.0 cm. Almost similar observations have been reported in other studies such as Sharma M et al (2016),²³ Gupta K et al (2016)¹² and Pan Y et al (2017).⁹ In India owing to the

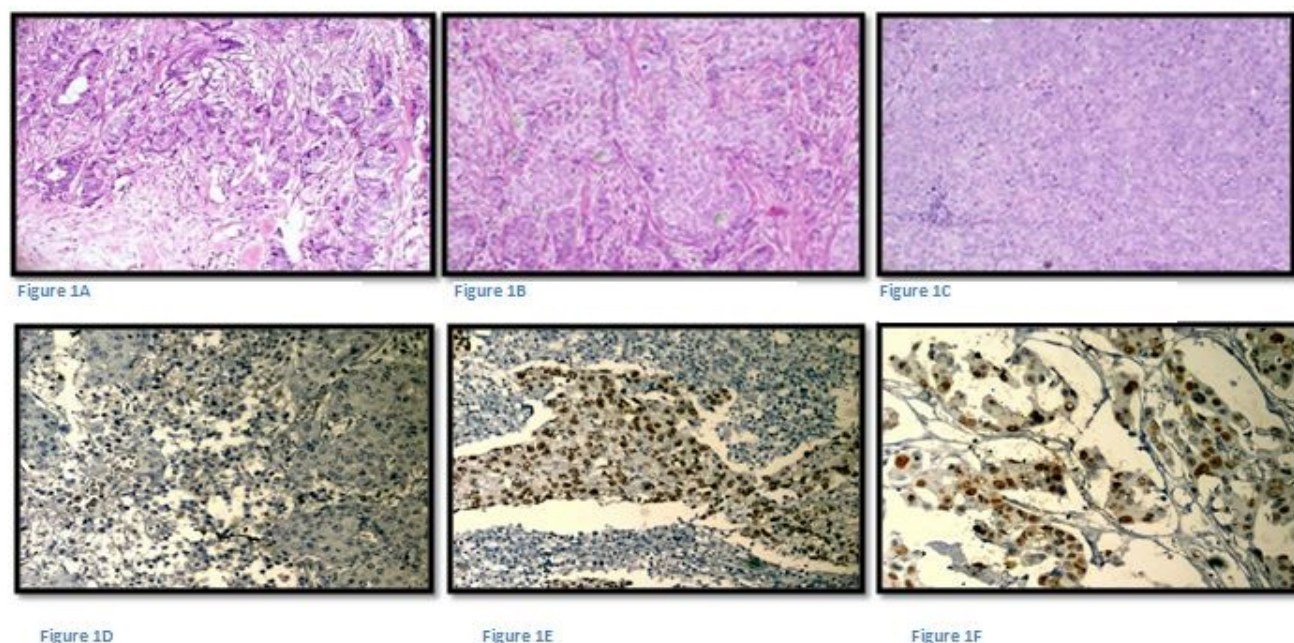


Fig. 1: **A:** Invasive carcinoma of no special type (NST) showing tubule formation, Grade I (H & E, 200X); **B:** Invasive carcinoma of NST showing moderate differentiation, Grade II (H&E, 200X); **C:** Invasive carcinoma of NST poorly differentiated, Grade III (H & E, 200X); **D:** Expression of p53: photomicrograph showing nuclear staining in 5-19% of invasive tumor cells. (IHC, 200X); **E:** Expression of p53: photomicrograph showing nuclear staining in 20-50% of invasive tumor cells. (IHC, 200X); **F:** Expression of p53: photomicrograph showing nuclear staining in >50% of invasive tumor cells. (IHC, 200X).

lack of awareness of this disease and in absence of a breast cancer screening program, the majority of breast cancers are diagnosed at a relatively advanced stage.¹⁶

The terminology for the most common histological type of breast carcinoma has changed from invasive ductal carcinoma, not otherwise specified (NOS) 2003 to invasive (infiltrating) carcinoma of no special type (NST) 2012.²⁴ In the present study, invasive carcinoma of no special type was the commonest histological type (41/50, 82%) followed by invasive lobular carcinoma (4/50, 8%), invasive carcinoma with neuroendocrine differentiation (2/50, 4%), metaplastic carcinoma (2/50, 4%) and mucinous carcinoma (1/50, 2%). Almost similar results have been reported in the past by various workers Ayadi L et al. (2008),²⁵ Nikhra et al. (2014),¹⁴ Yadav R et al. (2016),¹⁵ Puvitha RD et al. (2016)²⁶ and Hashmi AA et al. (2018).²⁷ Results of the present study were in close proximity to study done by Ayadi L et al. (2008),²⁵ except for inflammatory carcinoma of breast which is more common in Tunisia and the region of North Africa. On the contrary Nikhra et al. (2014)¹⁴ recorded a higher incidence, 95.34% for infiltrating ductal carcinoma.

All the cases were graded according to Nottingham modification of Bloom Richardson method. In present study, majority of the cases were in grade II (21/50, 42%) followed by grade I (16/50, 32%) and grade III (13/50, 26%). A large number of studies have reported the similar findings such

as Ambroise et al., 2011,¹⁹ Puvitha RD et al., 2016²⁶ and Pan Y et al., 2017.⁹ However, Geethamala K et al. (2015)²¹ found grade I (54%) to be more common than other grades in their study.

In the present study, most of breast carcinoma cases were positive for lymph node metastasis (20/36, 55.55%) which is similar to studies done by Azizun-Nisa A et al. (2008),²⁸ Sharma M et al. (2016)²³ and opposite to study done by Payandeh M et al. (2015).²⁹

The NPI is the most widely accepted prognostic index^{30,31} and developed through multivariate analysis. In clinical practice, three prognostic groups are identified, a good prognostic group with scores less than 3.4, a moderate prognostic group with scores of 3.4-5.4 and a poor prognostic group with score of over 5.4. The respective 15 years survival rates are good, moderate, poor in 80%, 42% and 15% respectively.

In present study, majority of patients were in moderate prognostic group (17/36, 47.2%) followed by poor prognostic (12/36, 33.3%) and good prognostic group (7/36, 19.5%) similar to findings reported by Haybittle JL et al. (1982),³⁰ Todd JH et al. (1987)³¹ and Rolland P et al. (2006).³²

The p53 gene appears to play a prime role in controlling cell proliferation and apoptosis, and in DNA repair. The genetic changes most commonly found in breast cancer are alterations in the p53 tumor-suppressor gene, with an

Table 5:

p53 expression	Payendah M et al, 2015 ²⁹ (%)	Gupta K et al, 2016 ¹² (%)	Pan Y et al, 2017 ⁹ (%)	Present study (%)
Positive	34	88.9	73.1	48
Negative	66	11.1	26.9	52

incidence ranging from 15 to 50% in different series. In present study, p53 over-expression (positive, $\geq 5\%$) was seen in (24/50, 48%) cases and rest were negative for p53 expression. Out of overall p53 positive cases, majority of cases show moderate over-expression (14/24, 58.33%) for p53 followed by high over-expression (8/24, 33.34%). Various studies done by Payendah M et al. (2015)²⁹, Gupta K et al. (2016),¹² Pan Y et al. (2017)⁹ also reported p53 over-expression in 34%, 88.9% and 73.1% cases respectively.

In the present study, invasive carcinoma of no special type was the commonest histomorphological type. Maximum p53 over-expression ($\geq 5\%$) was seen in invasive carcinoma of no special type (22/41, 53.7%) followed by invasive carcinoma with neuroendocrine differentiation (1/2, 50%) and metaplastic carcinoma (1/2, 50%). Infiltrating lobular carcinoma and mucinous carcinoma of breast were negative for p53 expression. The results were found to be statistically insignificant and correlated with other studies done by Golmohammadi R et al, 2012³³ and Kim T et al, 2015.³⁴ In this study, maximum p53 expression ($>5\%$) was seen in tumor size of more than 5cm (9/15, 60%) followed by tumor size ≤ 2 cm (3/6, 50%) and >2 -5cm (12/29, 41%). The results were found to be statistically significant and correlated with other studies done by Rolland P et al., 2007³² and Hashmi AA et al, 2017.²⁷ However no statistical correlation was reported by Gupta KK et al., 2016¹² and Pan Y et al., 2017⁹.

In the present study, maximum p53 expression ($\geq 5\%$) was associated with grade III breast tumors (9/13, 69.2%) followed by grade II breast tumors (10/21, 47.6%) and grade I tumors (5/16, 31.3%). The results were found to be statistically insignificant. These findings correlate with studies done by Pan Y et al (2017)⁹ and Hashmi et al (2018).²⁷ However grade association with p53 was found to be significant in studies done by Yamamoto et al, 2014³³ and Gupta K et al, 2016.¹²

p53 expression ($\geq 5\%$) was seen maximum in cases with lymph node metastasis (13/20, 65%) as compared to lymph node with no metastasis (5/16, 31.2%) in present study and above result was found to be statistically significant ($p=0.044171$). These findings correlate with studies done by Kikuchi S et al., 2013³⁴ (45%) and Gupta K et al., 2016¹² (98.2%). But according to studies done by Han JS et al. (2011)³⁵ and Yang P et al. (2013),³⁶ no significant correlation was found.

5. Conclusion

In conclusion, we found a statistical significant correlation of p53 expression with tumor size and lymph node metastasis, but no correlation with histological type and tumor grade. However, p53 expression seems to be higher in patients with higher tumor grade. So, breast cancer aggressiveness appears to be directly related to the percentage of p53 positive cancer cells and its over-expression is directly related to histological grade and cell-proliferation fraction. Cases positive for p53 could be interpreted as those which have lost a mechanism for controlling the inhibition of cell proliferation and have gained an activator for malignancy potential. Above findings and correlation with various studies proved that p53 is an independent and poor prognostic factor and can be a potential target for future treatment in breast carcinoma. However, studies need to be carried out on larger scale.

6. Source of Funding

None.

7. Conflict of Interest

None.

References

1. Bray F, Ferlay J, Soerjomataram I, Siegel RL, Torre LA, Jemal A. Global cancer statistics 2018: GLOBOCAN estimates of incidence and mortality worldwide for 36 cancers in 185 countries. *Cancer J Clin.* 2018;68:394–424.
2. Torre LA, Bray F, Siegel RL, Ferlay J, Lortet-Tieulent J, Jemal A. Global cancer statistics, 2012. *Cancer J Clin.* 2012;65:87–108.
3. Jemal A, Center MM, DeSantis C, Ward EM. Global Patterns of Cancer Incidence and Mortality Rates and Trends. *Cancer Epidemiol Biomark Prev.* 2010;19(8):1893–1907.
4. Malvia S, Bagadi SA, Dubey US, Saxena S. Epidemiology of breast cancer in Indian women. *Asia-Pac J Clin Oncol.* 2017;(13):289–95.
5. Sinha S, Nath J. Predictive and Prognostic Factors in Breast Cancer and their Association with ER PR HER2/neu Expression. *J Carcinog Mutagenesis.* 2016;07(02). doi:10.4172/2157-2518.1000263.
6. Kim M, Shin KH, Jung SY, Lee S, Kang HS, Lee ES. Identification of Prognostic Risk Factors for Transient and Persistent Lymphedema after Multimodal Treatment for Breast Cancer. *Cancer Res Treat.* 2016;48(4):1330–7.
7. Pan B, Yao R, Shi J, Xu QQ, Zhou YD, Mao F, et al. Prognosis of subtypes of the mucinous breast carcinoma in Chinese women: a population-based study of 32-year experience. *Oncotarget.* 2016;7(25):38864–5.
8. Lee MY, Chang WJ, Kim HS, Lee JY, Lim SH, Lee JE. Clinicopathological Features and Prognostic Factors Affecting Survival Outcomes in Isolated Locoregional Recurrence of Breast Cancer: Single Institutional Series. *PLoS one.* 2016;doi:10.1371/journal.pone.0163254.
9. Pan Y, Yuan Y, Liu G, Wei Y. P53 and Ki-67 as prognostic markers in triple-negative breast cancer patients. *PLoS one.* 2017;12(2):172324.

10. Williams AB, Schumacher B. p53 in the DNA-Damage-Repair Process. *Cold Spring Harb Perspect Med.* 2016;6(5):a026070.
11. Liu K, Bellam N, Lin HY, Wang B, Stockard CR, Grizzle WE, et al. Regulation of p53 by TopBP1: a Potential Mechanism for p53 Inactivation in Cancer. *Mol Cell Biol.* 2009;29:2673–93.
12. Gupta KK, Dash AK, Mishra DP. Correlation of p53 Expression with clinicopathological characteristics of breast carcinoma. *Ann Pathol Lab Med.* 2016;12(3):162–70.
13. Agarwal G, Ramakant P. Breast Cancer Care in India: The Current Scenario and the Challenges for the Future. *Breast Care.* 2008;3:21–7.
14. Nikhra P, Patel S, Taviad D, Chaudhary S. Study of ER (estrogen receptor), PR (Progesterone Receptor) and HER-2/NEU (Human epidermal growth factor receptor) expression by immunohistochemistry in breast carcinoma. *Int J Biomed Adv Res.* 2014;5:275–8.
15. Yadav R, Sen RA, Chauhan PR, Er, Pr. HER2/neu status and relation to clinicopathological factors in breast carcinoma. *Int J Pharm Pharmaceutical Sci.* 2016;8:287–90.
16. Lodha R, Paul D, Nahar N, Bhagat VK, Joshi A, Lodha KM, et al. Association between reproductive factors and breast cancer in an urban set up at central India: A case-control study. *Indian J Cancer.* 2011;48:303.
17. Kakarala M, Rozek L, Cote M, Liyanage S, Brenner DE. Breast cancer histology and receptor status characterization in Asian Indian and Pakistani women in the U.S. - a SEER analysis. *BMC Cancer.* 2010;10(1):191.
18. Lee HSA. Why is carcinoma of the breast more frequent in the upper outer quadrant? *Breast.* 2005;14(2):151–5.
19. Ambrose M, Ghosh M, Mallikarjuna VS, Kurian A. Immunohistochemical profile of breast cancer patients at a tertiary care hospital in South India. *Asian Pac J Cancer Prev.* 2011;12(3):625–9.
20. Sandhu DS, Sandhu S, Karwasra RK, Marwah S. Profile of breast cancer patients at a tertiary care hospital in north India. *Indian J Cancer.* 2010;47:16.
21. Geethamala K, Murthy VS, Vani BR. Hormone receptor expression in breast carcinoma at our hospital: An experience. *Clin Cancer Investig J.* 2015;4(4):511.
22. Sainsbury RC. The breast. In: Russell RDG, Williams NS, Bulstrode CJK, editors. *Bailey & Love's Short Practice of Surgery.* London: Hodder Education; 2004. p. 824–46.
23. Sharma M, Khanna M, Manjari M, Madan M, Singh T, Garg T. Immunohistochemical characteristics of Breast Cancer patients with the comparative study of BRCA1, ER, PR, BCL2, P53 and Ki-67 immunohistochemical markers: A population based study. *Ann Pathol Lab Med.* 2016;3(6):490–4.
24. Lakhani SR, Ellis IO, Schnitt SJ, Tan PH, Vijver MJVD. World Health Organisation classification of tumors of the breast.
25. Ayadi L, Khabir A, Amouri H, Karray S, Dammak A, Guermazi M, et al. Correlation of HER-2 over-expression with clinico-pathological parameters in Tunisian breast carcinoma. *World J Surg Oncol.* 2008;6(1):112–9.
26. Puvitha RD, Shifa S. Breast carcinoma, receptor status, and HER-2/neu over expression revisited. *Int J Sci Study.* 2016;3:52–8.
27. Hashmi AA, Naz S, Hashmi SK, Hussain ZF, Irfan M, Khan EY, et al. Prognostic significance of p16 & p53 immunohistochemical expression in triple negative breast cancer. *BMC Clin Pathol.* 2018;18(1):9.
28. By AN, Raza F, Kayani N. Comparison of ER, PR and HER-2/neu (C-erb B 2) reactivity pattern with histologic grade, tumor size and lymph node status in breast cancer. *Asian Pac J Cancer Prev.* 2008;9(4):553–6.
29. Payandeh M, Malayeri R, Sadeghi M, Sadeghi E, Gholami F. Expression of p53 and Ki67 in the patients with triple negative breast cancer and invasive ductal carcinoma. *Am J Cancer Prev.* 2015;3:58–61.
30. Haybittle JL, Blamey RW, Elston CW, Johnson J, Doyle PJ, Campbell FC, et al. A prognostic index in primary breast cancer. *Br J Cancer.* 1982;45(3):361–6.
31. Todd JH, Dowle C, Williams MR, Elston CW, Ellis IO, Hinton CP. Confirmation of a prognostic index in primary breast cancer. *Br J Cancer.* 1987;56(4):489–92.
32. Rolland P, Spendlove I, Madjid Z, Rakha EA, Patel P, Ellis IO, et al. The p53 positive Bcl-2 negative phenotype is an independent marker of prognosis in breast cancer. *Int J Cancer.* 2007;120(6):1311–7.
33. Yamamoto M, Hosoda M, Nakano K, Jia S, Hatanaka KC, Takakuwa E, et al. p53 accumulation is a strong predictor of recurrence in estrogen receptor-positive breast cancer patients treated with aromatase inhibitors. *Cancer Sci.* 2014;105:81–8.
34. Kikuchi S, Nishimura R, Osako T, Okumura Y, Nishiyama Y, Toyozumi Y, et al. Definition of p53 overexpression and its association with the clinicopathological features in luminal/HER2-negative breast cancer. *Anticancer Res.* 2013;33:3891–8.
35. Han JS, Cao D, Molberg KH, Sarode VR, Rao R, Sutton LM, et al. Hormone Receptor Status Rather Than HER2 Status Is Significantly Associated With Increased Ki-67 and p53 Expression in Triple-Negative Breast Carcinomas, and High Expression of Ki-67 but Not p53 Is Significantly Associated With Axillary Nodal Metastasis in Triple-Negative and High-Grade Non-Triple-Negative Breast Carcinomas. *Am J Clin Pathol.* 2011;135(2):230–7.
36. Yang P, Du CW, Kwan M, Liang SX, Zhang GJ. The impact of p53 in predicting clinical outcome of breast cancer patients with visceral metastasis. *Sci Rep.* 2013;3:2246.

Author biography

Bharat Jindal Junior Resident

Rajender Kumar Thakral Professor

Alok Mohan Professor

Vaseem Ansari Junior Resident

Veena K Sharma Professor and Head

Cite this article: Jindal B, Thakral RK, Mohan A, Ansari V, Sharma VK. Role of p53 as a prognostic marker in breast carcinoma and its correlation with tumor size, tumor grade and lymph node metastasis. *Indian J Pathol Oncol* 2020;7(3):378-383.