



Original Research Article

To study the association of urine microalbumine and the severity of diabetic retinopathy among type II diabetics: A hospital based cross sectional study

Sheldon J Goudinho^{1,*}, Jasmine M Jacob¹, Neethu Rollands¹

¹Dept. of Medical Retina, Dr. Somervell Memorial CSI Medical College Hospital, Thiruvananthapuram, Kerala, India



ARTICLE INFO

Article history:

Received 20-04-2018

Accepted 04-04-2020

Available online 30-09-2020

Keywords:

Diabetic retinopathy

Diabetes mellitus

Microalbuminuria

ABSTRACT

Aim: The objective of the paper is to estimate the prevalence of albuminuria (both microalbuminuria and macroalbuminuria) among type 2 diabetic patients and to determine its role as a risk factor for the presence and severity of diabetic retinopathy.

Materials and Methods: We conducted a hospital based cross sectional study in 360 patients who had type 2 diabetes mellitus. Study was conducted on all type II diabetic patients who came to the department of ophthalmology, DR SMCSI medical college, Karakonam. Study period was 2 years. All the patients had undergone through a thorough ocular examination. The ETDRS scale was used for grading Diabetic retinopathy. A morning urine sample was used for detecting albuminuria. The values of urine albumin excretion of 30 – 300 mg in 24 hours was regarded as microalbuminuria and values more than 300 mg in 24hours was considered as macroalbuminuria. The analysis was done using SPSS 16.0.

Results: In our present study the prevalence of microalbuminuria was found to be 33.9% and the prevalence of macroalbuminuria was found to be 16.7%. Those with macroalbuminuria when compared to those with microalbuminuria or normoalbuminuria is shown to have a greater prevalence of diabetic retinopathy and also was found to have greater severity of the disease (33.3%) which was found to be statistically significant, p value= 0.001.

Conclusion: Microalbuminuria is a very useful biomarker in predicting the presence and severity of diabetic retinopathy among type II diabetic patients. Patients with microalbuminuria have a higher risk for the development and the progression of diabetic retinopathy.

© 2020 Published by Innovative Publication. This is an open access article under the CC BY-NC license (<https://creativecommons.org/licenses/by-nc/4.0/>)

1. Introduction

Diabetes mellitus is considered as one of the most common metabolic disorders. The overall global prevalence of diabetes mellitus is estimated to increase from 4% in 1995 to almost 5.4% by the year 2025.^{1,2} The two most common complications seen among patients with long standing diabetes is diabetic retinopathy and nephropathy.

These are the two major microvascular complications of long standing diabetes. They are thought to be due to endothelial dysfunction mediated microvascular complications of diabetes mellitus.¹ Worldwide diabetic nephropathy is considered as one of the most common cause

for the end stage renal disease.

Due to this high magnitude of damages that are caused by these microvascular complications, there is an urgent need for a sensitive marker, that will aid in the detection of both nephropathy and retinopathy. Microalbuminuria is almost widely accepted as the first clinical sign of diabetic nephropathy.³ Early detection of diabetic retinopathy can be done by screening all the diabetic patients by doing a dilated Fundus evaluation.⁴

The association between the renal and cardiovascular complications with that of microalbuminuria among type I diabetics has been well established whereas in type 2 diabetes only a lesser association is observed.⁵ Many researchers in their studies have suggested the role of microalbuminuria as an important marker for predicting

* Corresponding author.

E-mail address: sheldonjasmine@gmail.com (S. J. Goudinho).

the mortality, cardio vascular disease and renal failure even in individuals without diabetes mellitus. There are only very few studies that have been done to investigate the possible association between diabetic retinopathy and microalbuminuria.^{6,7}

2. Purpose of the Study

The aim of this study is to estimate the prevalence of albuminuria (microalbuminuria and macroalbuminuria) among type II diabetics and to determine its role as a risk factor for both the presence and the severity of diabetic retinopathy.

3. Materials and Methods

We conducted a hospital based cross sectional study in 360 patients with type 2 diabetes in the department of ophthalmology, DR SMCSI medical college hospital, Karakonam. All the patients had undergone a comprehensive ophthalmic evaluation. The ETDRS scale was used for grading Diabetic retinopathy. A morning urine sample was used to detect albuminuria. Urine albumin excretion of value 30 – 300 mg in 24 hours was regarded as microalbuminuria and values more than 300 mg in 24hours was regarded as macroalbuminuria. In our study immunoturbidity method was used to estimate the urine micro albumin level. The analysis was done using SPSS 16.0.

4. Results

The study was conducted on 360 diabetic patients. The number of females were 197 and males were 163. The mean age was found to be 63.48 (SD +6.921) years. The minimum age was found to be 42 years and the maximum age was 88 years among the study participants. In our study the mean duration of diabetes mellitus was 9.36 years with most participants in the range of 5-15 years duration. Among the 360 study participants studied, 141 of them had diabetic retinopathy which accounted for 39.2%. Remaining 219 participants did not have any diabetic retinopathy changes (60.8%).

Among the 141 participants with diabetic retinopathy studied, it was found that the prevalence of very mild NPDR was 13.5%, mild NPDR was 18.4%, moderate NPDR was 36.9%, severe NPDR was 10.6%, very severe NPDR was 5% and PDR was 15.6%.

Among the 360 patients evaluated 178 (49.4%) were normoalbuminuric, 122 (33.9%) were microalbuminuric and 60 (16.7%) were macroalbuminuric.

It was found that the prevalence of diabetic retinopathy was more among those with microalbuminuria (41.1%) and macroalbuminuria (33.4%) when compared to those with normoalbuminuria (25.5%).

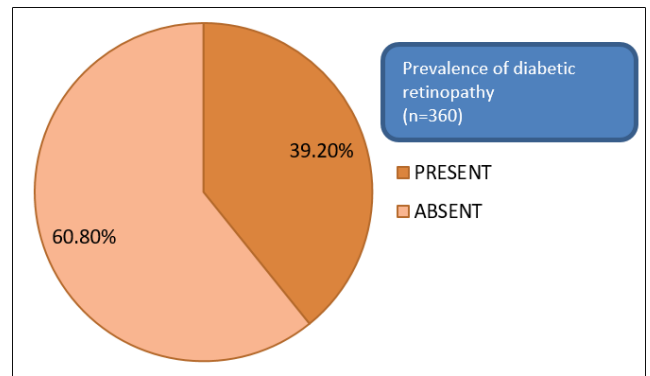


Fig. 1: Showing the prevalence of diabetic retinopathy

Table 1: Prevalence of various types of diabetic retinopathy

Types of Diabetic Retinopathy	Frequency (n=141)	Prevalence
Very Mild NPDR	19	13.5%
Mild NPDR	26	18.4%
Moderate NPDR	52	36.9%
Severe NPDR	15	10.6%
Very Severe NPDR	7	5%
PDR	22	15.6%

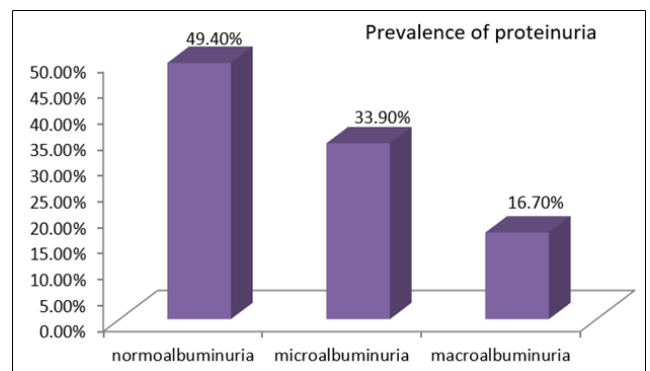


Fig. 2: Prevalence of proteinuria

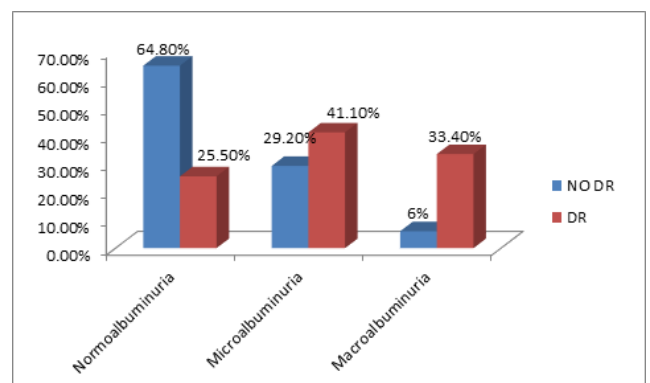


Fig. 3: Showing prevalence of diabetic retinopathy among normoalbuminuria, microalbuminuria and macroalbuminuria

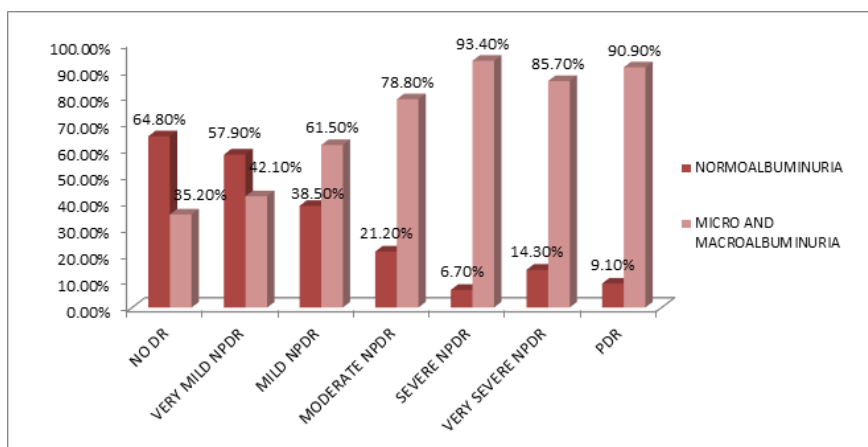


Fig. 4: Showing the prevalence of various types of diabetic retinopathy among those with normoalbuminuria, microalbuminuria and macroalbuminuria

Among the 360 patients studied it was found that Proliferative diabetic retinopathy was seen in 22 patients. Remaining 338 patients did not have proliferative diabetic retinopathy (no DR in 219 patients, very mild NPDR in 19, mild NPDR in 26, moderate NPDR in 52, severe NPDR in 15 and very severe NPDR in 7).

Among those who had proliferative diabetic retinopathy 2 patients had normoalbuminuria (9.1%), remaining 20 patients (90.90%) had abnormal proteinuria (31.8% had microalbuminuria and 59.1% had macroalbuminuria).

5. Discussion

When compared to those with normoalbuminuria, subjects with microalbuminuria or macroalbuminuria were found to be more prone for the development of diabetic retinopathy. Therefore the presence of microalbuminuria can be considered as a marker to estimate the risk of the development and the progression of proliferative diabetic retinopathy. It does not only indicate a kidney disease, but is a secondary and indirect effect of a distant disease process on the kidney physiology.

In our present study we got a statistically significant association between diabetic retinopathy and proteinuria. In this study the prevalence of micro and macroalbuminuria was 33.9% and 16.7% respectively. 58(41.1%) subjects had urine microalbuminuria and 47(33.3%) subjects had macroalbuminuria among those with retinopathy compared to 64(29.2%) subjects having microalbuminuria and 13(5.9%) subjects having macroalbuminuria among those who had no diabetic retinopathy. Among those with microalbuminuria 8(42.1%) had very mild NPDR, 13(50%) had Mild NPDR, 23(44.2%) had moderate NPDR, 7(46.7%) had severe NPDR, 7(31.8%) had PDR. Whereas in those with macroalbuminuria very mild NPDR was seen in 0%, mild NPDR in 3(11.5%), moderate NPDR in 18(34.6%), severe NPDR in 7(46.7%), very severe NPDR in 6(85.7%),

PDR in 13(59.1%). In a study conducted by Masoud R et al the prevalence of microalbuminuria and macroalbuminuria was found to be 25.9% and 14.5% respectively. In their study also they got a statistically significant association between various grades of diabetic retinopathy and urine albuminuria.⁸ According to their study the prevalence of various grades of retinopathy among those with microalbuminuria was grade 1 retinopathy in 27(18.9%) subjects, grade 2 in 24(16.8%), grade 3 in 4(2.8%), grade 4 in 7(4.9%) whereas in those with macroalbuminuria grade 1 was seen in 21(26.3%), grade 2 in 19(23.8%), grade 3 in 9(11.3%), grade 4 in 14(17.5%). In literature there are various studies that were carried out to determine the association between the prevalence of diabetic retinopathy and microalbuminuria in Type 2 diabetes. All these studies yielded different rates ranging between 16 to 53.4% for retinopathy.^{9–11}

The prevalence of albuminuria was found to differ among different studies. This variation could be because of the differences in the measurement methods that was used in various studies; variation in the control of the blood sugar levels and the differences in the population or races studied. The method that was used to measure the microalbuminuria also may have a significant influence on the difference in the frequency of microalbuminuria. In our present study immunoturbidity method was used to measure the urine microalbumin level.

Chen H et al. in their study found that the frequency of diabetic retinopathy increases with the presence of microalbuminuria.¹² There are however few studies that oppose such a relationship. In a study conducted by Erasmus et al. they found that microalbuminuria may not predict retinopathy and they concluded that it occurs independently from either because of poor glycemic control or due to elevated levels of blood pressure.¹³

In our study we found that frequency of diabetic retinopathy increased with presence of microalbuminuria. The common mechanism that is involved in the tissue damage in both retinopathy and nephropathy could explain this association. Further studies are however required for the better knowledge and understanding of the relationship between urine microalbuminuria and diabetic retinopathy. A more clearer understanding about the association between retinopathy and microalbuminuria, will be very useful to have a better knowledge about the pathophysiology of the various microvascular complications caused as a result of diabetes mellitus.

6. Conclusion

The prevalence of urine albuminuria in Type 2 diabetics was significant and it may be considered as a risk factor for the presence and the severity of diabetic retinopathy. Therefore, diabetic patients with abnormal levels of microalbuminuria will definitely benefit if they could get a more regular ophthalmic follow-ups. This will help in a more early recognition of diabetic retinopathy changes. The healthcare providers could pay more attention to the relationship between retinopathy and nephropathy in order to further optimize the frequency of screening for diabetic retinopathy in patients with type 2 diabetes.

7. Source of Funding

None.

8. Conflict of Interest

None.

References

- Ramachandran A. Socio-economic burden of diabetes in India. *J Assoc Physicians India*. 2007;55:9–12.
- Maurya RP. Diabetic retinopathy :My brief synopsis. *Ind J Clin Exp Opth*. 2015;1(4):189–190.
- Sobngwi E, Mbanya JC, Moukouri EN, Ngu KB. Microalbuminuria and retinopathy in a diabetic population of Cameroon. *Diabetes Res Clin Pract*. 1999;44:191–6.
- Prevalence of small vessel and large vessel disease in diabetic patients from 14 centres. The World Health Organisation Multinational Study of Vascular Disease in Diabetics. Diabetes Drafting Group. *Diabetologia*. 1985;28:615–40.
- Deckert T, Yokoyama H, Mathiesen E, Ronn B, Jensen T, Feldt-Rasmussen B, et al. Cohort study of predictive value of urinary albumin excretion for atherosclerotic vascular disease in patients with insulin dependent diabetes. *BMJ*. 1996;312(7035):871–4.
- Retnakaran R, Cull CA, Thorne KI, Adler AI, and RRH. Risk Factors for Renal Dysfunction in Type 2 Diabetes: U.K. Prospective Diabetes Study 74. *Diabetes*. 2006;55(6):1832–9.
- Rani PK, Raman R, Gupta A, Pal S, Kulothungan V, Sharma T. Albuminuria and Diabetic Retinopathy in Type 2 Diabetes Mellitus Sankara Nethralaya Diabetic Retinopathy Epidemiology and Molecular Genetic Study (SN-DREAMS, report 12). *Diabetol Metab Syndr*. 2011;3. doi:10.1186/1758-5996-3-9.
- Manaviat MR, Afkhami M, Shoja MR. Retinopathy and microalbuminuria in type II diabetic patients. *BMC Ophthalmol*. 2004;4(1):9.
- Cade WT. Diabetes-Related Microvascular and Macrovascular Diseases in the Physical Therapy Setting. *Phys Ther*. 2008;88(11):1322–35.
- UK Prospective Diabetes Study (UKPDS). VIII. Study design, progress and performance. *Diabetologia*. 1991;34(12):877–90.
- Weyer C, Bogardus C, Mott DM, Pratley RE. The natural history of insulin secretory dysfunction and insulin resistance in the pathogenesis of type 2 diabetes mellitus. *J Clin Investigation*. 1999;104(6):787–94.
- Chen H, Zheng Z, Huang Y, Guo K, Lu J, Zhang L. A microalbuminuria threshold to predict the risk for the development of diabetic retinopathy in type 2 diabetes mellitus patients. *PLoS One*. 2012;7(5):36718.
- Erasmus RT, Oyeyinka G, Arije A. Microalbuminuria in non-insulin-dependent (type 2) Nigerian diabetics: relation to glycaemic control, blood pressure and retinopathy. *Postgraduate Med J*. 1992;68(802):638–42.

Author biography

Sheldon J Goudinho Professor and HOD

Jasmine M Jacob Professor

Neethu Rollands Junior Resident

Cite this article: Goudinho SJ, Jacob JM, Rollands N. To study the association of urine microalbumine and the severity of diabetic retinopathy among type II diabetics: A hospital based cross sectional study. *Indian J Clin Exp Ophthalmol* 2020;6(3):406-409.