

## Dye Removal of Adsorption Study in Thespesia Populnea Seed

**R. Bhuvanewari**

Research scholar, Dept. of  
Chemistry, Govt. Arts College for  
Men, Nandanam, Chennai, India

**K. Arivalagan**

Assistant Professor, Dept. of  
Chemistry, Govt. Arts College for  
Men, Nandanam, Chennai, India

**Subramanian Sivanesan**

Head of the Dept. of Applied  
Science and Technology, AC  
College of Technology, Anna  
University, Chennai, India

### ABSTRACT

The potential of Thespesia Populnea Seed (TPS) powder, for the removal of Congo red 4B (CR) dye from aqueous solution was investigated. The adsorbent was characterized by FTIR and SEM analysis. Batch adsorption studies were conducted and various parameters such as pH, adsorbent dosage, initial dye concentration, contact time and temperature were studied to observe their effects in the dye adsorption process. The optimum conditions for the adsorption of Congo red 4B onto the adsorbent TPS was found to be contact time  $75 \text{ min}^{-1}$ , pH 3, temperature 303K for an initial dye concentration 22 mg/L and adsorbent dosage 0.12gm. The experimental equilibrium adsorption data fitted to the Langmuir isotherm and Freundlich isotherm model. The kinetic data conformed to the Pseudo second order kinetic model, suggesting that the rate limiting steps may be chemisorptions. Thermodynamic quantities such as Gibbs free energy  $\Delta G^0$ , enthalpy  $\Delta H^0$  and entropy  $\Delta S^0$  were evaluated. The negative values of  $\Delta G^0$  and the negative value of  $\Delta H^0$  obtained indicated the spontaneous and exothermic nature of the adsorption processes while the negative  $\Delta S^0$  value obtained decreased randomness during the adsorption process.

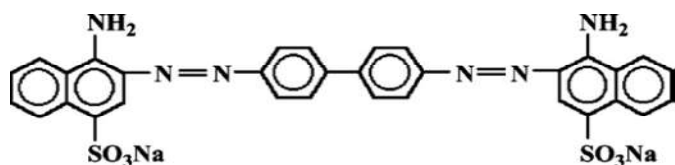
**Keywords:** Adsorption, Thespesia Populnea seed, Congo red 4B

### INTRODUCTION

Adsorption technique is by far the most versatile and widely used moreover, this processes become

economic if the adsorbent used is available and cheap in cost. Thespesia Populnea (Malvaceae) is a large tree found in tropical regions and coastal forests of India opine<sup>1</sup>. Various parts of T. Populnea are found to possess useful medicinal properties, such as antibacterial, antioxidant, purgative, anti fertility, anti-inflammatory and heap to protective active opine<sup>2</sup>. Moreover, all the parts of the TPS plant have been used in traditional system of medicine. Industries manufacturing dye and dye intermediates are the largest sector of chemical industries in India. There is a variety of dyes like acid dyes, basic dyes, azo dyes, mordent dyes, plastic dyes, etc. The effluents from these industries thus contain dyes as main pollutant<sup>3-6</sup>. Dye contaminated waste water originates from various industries such as textile, leather, food, dyeing, cosmetics etc. consequently, there is a considerable need for the removal of dye from water effluents prior to their discharge in to receiving water<sup>7</sup>. A huge amount of water us necessary by these industries for the cleaning and washing purpose and they discharge highly colored effluents containing different dyes. Many investigators have studied the feasibility of inexpensive alternative material like pear millet husk, date pits, sawdust, buffing dust of leather industry, coir pith, crude oil residue tropical grass, olive stone and almond shells, pines bark, wood waste, coconut shell, etc., as carbonaceous precursors, for the removal of dyes from water and waste water. Present study Congo red 4B is one of the types of acid dyes. Congo red 4B is a heterocyclic aromatic chemical compound with molecular formula

$C_{32}N_{22}N_6Na_2O_6S_2$  fig. 1 Shows the structure of Congo red 4B, its chemical name is sodium salt of Benzidine azo-bis-naphthylamine-4 sulfonic acid and molecular weight is 696.66 g/mol. Due to color change from blue to red at pH 3-5 can be used as pH indicator.



**Fig. 1 Structure of Congo red 4B dye**

In the presence of color in the water bodies reduce light penetration which in turn upsets the biological metabolism process, disposal of dye waste water without proper treatment destructed the aquatic communities present in the ecosystem and some dyes are reported to cause allergic dermatitis, skin irritation, cancer and mutation in humans if they are discharged as wastewater without any treatment<sup>8-12</sup>. There are no reports in this plant for adsorption studies. This prompted us to do research work in this adsorption of Congo red 4B dye using biomass from *Thespesia Populnea* seed.

## MATERIAL AND METHODS

### MATERIAL

*Thespesia Populnea* seed (TPS) Ennore, Congo red 4B dye Cas.No: ASC 2562 Kevin laboratory (Avara synthesis Pvt.Ltd.), pH meter, UV-1800 Double Beam Spectrophotometer-(Shimadzu), FTIR- Fourier transform spectrophotometer, SEM-Scanning electron microscopy (TEQIP Equipment), Orbital shaker, R-BC Laboratory centrifuge and Weighing machine and Air oven (Shimadzu).

### METHODS

**Adsorbent Collection and Preparations (TPS):** The *Thespesia Populnea* Seed (TPS) was collected from Ennore (India). Their seed was washed thoroughly with running tap water to removed sand, dirt and other impurities present in it and dried in sunlight for one week until all moisture were remove dried in an oven at 50°C. It was the ground well in a mixer and sieved powdered. The TPS powder that passed through the sieve were stored in an air tight container labeled TPS and used as adsorbent without any further treatment.

**Preparation of Adsorbate Solution:** Analytical grade Congo red 4B dye ( $C_{32}N_{22}N_6Na_2O_6S_2$ ) Molecular weight 696.68g/mol  $\lambda_{max}=495nm$  was obtained from the UV-spectrophotometer (Shimadzu UV-1800) from Anna University (EM laboratory). Purchased Avara synthesis Pvt.Ltd. Low cost adsorbent. A stock solution Congo red 4B dye of concentration 100 mg/L was prepared by dissolving of 0.1g of powder adsorbate dye in 1L standard flask filled with distilled water. Experimental dye solution of desired concentration was obtained by appropriate dilution of the stock solution. Correlation coefficient value of dye concentration 100 mg/L value ( $R^2=0.997$ ).

### Batch Adsorption Experiments

Batch adsorption of Congo red 4B dye onto the adsorbent TPS was conducted in a 250ml conical flask containing 40ml of known concentration of the CR dye solution and accurately weighed amount of the adsorbents. The mixtures in the flask were agitated on a mechanical shaker at a constant speed of 250 rpm. The effect of contact time (30, 45, 60 and 75) min<sup>-1</sup>, Adsorbent dosage (0.08, 0.10, 0.12 and 0.14) gm, Initial dye concentration (22, 24, 26, 28 and 30) mg/L, pH (3, 4, 5, 6, 7 and 8) and Temperature (303, 313, 323 and 333) K were evaluated. The flask containing the samples were withdrawn from the shaker at predominant time intervals, filtered and the final concentration of CR dye was determining using the equation. The dye uptake capacity for each sample was calculated according to a mass balance using equation (1)

$$\text{Amount adsorbed } (q_e) = \frac{(C_0 - C_e)}{m} \times V \quad (1)$$

Where,  $m$  is the mass of adsorbent (g),  $v$  the volume of the solution (L),  $C_0$  is the initial concentration of dye (mg /L),  $C_e$  is the equilibrium dye concentration (mg/L) and  $q_e$  is the amount of dye quantity adsorbed at equilibrium (mg/g). The percentage removal of dye from the solution was calculated by the following equation (2)

$$\% \text{ removal} = \frac{(C_0 - C_i)}{C_0} \times 100 \quad (2)$$

### Adsorption Isotherm

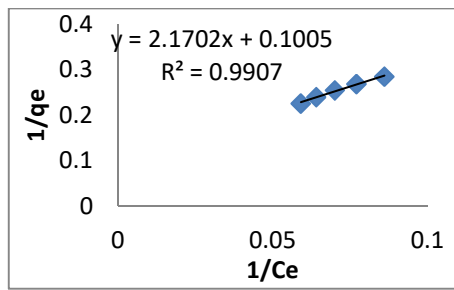
Two adsorption isotherms models were applied to describe the sorption equilibrium in the present study such as Langmuir and Freundlich isotherm model.

**Langmuir Isotherm**

The Langmuir sorption isotherm is applied to equilibrium sorption assuming monolayer sorption onto a surface with finite number of identical sites. The Langmuir equation is written as <sup>13</sup>.

$$1/q_e = 1/q_m K_L C_e + 1/q_m \tag{3}$$

Where,  $q_e$  is the amount of dye adsorbed at equilibrium (mg/g),  $q_m$  is the amount of dye adsorbed when saturation is attained (mg/g),  $C_e$  is the equilibrium dye concentration (mg/L) and  $K_L$  is the Langmuir constant related to the binding strength of the dye onto the adsorption. The Langmuir model described the monolayer adsorption. It assumes a uniform energy of adsorption, a single homogeneous layer of adsorbed solute at a constant temperature. Monolayer concentration increases with increase in temperature Fig. 2(a)



**Freundlich Isotherm**

The Freundlich isotherm is an empirical equation and is one of the most widely used isotherms for the description of multi-site adsorption. The linear form is as follows:

$$\log q_e = \log K_F + 1/n \log C_e \tag{4}$$

Where,  $K_F$  and  $n$  are the Freundlich isotherm constants indicating the adsorption capacity and adsorption intensity respectively <sup>14</sup>. The  $K_F$  and  $n$  can be calculated from the intercept and slope of the linear plot of  $\log q_e$  against  $\log C_e$ . The significance of  $n$  is as follows;  $n=1$  (linear),  $n<1$  (Chemical process),  $n>1$  (Physical process). The Freundlich constant is a heterogeneous factor and indicates that adsorption capacity increases with increase in temperature Fig. 2(b)

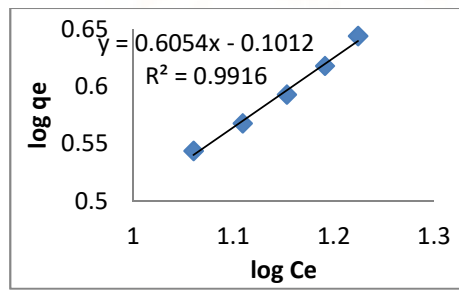


Fig. 2 (a) Langmuir adsorption isotherm (b) Freundlich adsorption model TPS CR

Table 1. Characteristic parameter of the adsorption isotherm model for CR adsorbing by TPS

Models	Isotherms Constants	Results
Langmuir	$q_m$ (mg/g)	10
	$K_L$ (L/mg)	0.046
	$R^2$	0.990
Freundlich	$1/n$	0.605
	$N$	1.652
	$K_F$ (mg/g)	-0.995
	$R^2$	0.991

**Adsorption Kinetics**

The Pseudo first order and Pseudo second order kinetic model were applied to study the adsorption kinetics of Congo red 4B dye to complete the extent of uptake in the adsorption processes.

**Pseudo first order kinetic model**

The linear form of the Lagergren's Pseudo first order kinetic model is represented by the rate equation (5)

$$\log(q_e - q_t) = \log q_e - \frac{k_1}{2.303} t \tag{5}$$

Where,  $q_e$  and  $q_t$  are the values of amount of the dye adsorbed per unit mass on the adsorbent at equilibrium and at various time  $t$ , respectively.  $K_1$  and calculated  $q_e$  can be from the slope and intercept respectively of the linear plot of  $\log(q_e - q_t)$  versus  $t$  <sup>15-16</sup> Fig. 3(a). These plots are linear; however, linearity of these curves does not necessarily assure first order

mechanism. Due mainly to the inherent disadvantages of correctly estimating equilibrium adsorption capacity the value obtained from the values; therefore first order kinetics is less likely to explain the rate processes.

**Pseudo second order kinetics**

The integrated form of the above model becomes,

$$\frac{t}{q_t} = \frac{1}{k_2 q_e^2} + \frac{1}{q_e} t \tag{6}$$

Where  $q_t$  is the amount of the adsorbed at contact time  $t$  (mg/g),  $q_e$  is amount of adsorbent adsorbed (mg/g) on the adsorbent at equilibrium. The initial adsorption rate  $h$  (mg.g-1min<sup>-1</sup>) is expressed as, among these models the criterion for their applicability is based on judgment the respectively correlation coefficient ( $R^2$ ) and agreement between experimental and calculated value of  $q_e$  Fig. 3(b) In

this model the rate determining step is biosorption mechanism involving chemisorptions, Where biosorbate removal from solution is due to physio chemical interaction between biomass biosorbate solution<sup>17</sup>.

**Intra particle diffusion model**

The intra particle diffusion model is expressed as,

$$q_t = K_{id}t^{1/2} + C \tag{7}$$

Where  $K_{id}$  is the amount of adsorbate time  $t$  (mg/g) and  $C$  is the variety of intercept (mg/g). A plot  $q_t$  versus  $t^{1/2}$  gives a linear relationship from which  $k_{id}$  values is determined from slope and value of  $C$  intercept gives an idea about thickness of boundary layer<sup>15</sup>. This is attributed to the instantaneous utilization of the most readily available adsorbing sites on the adsorbent surface. Table 2

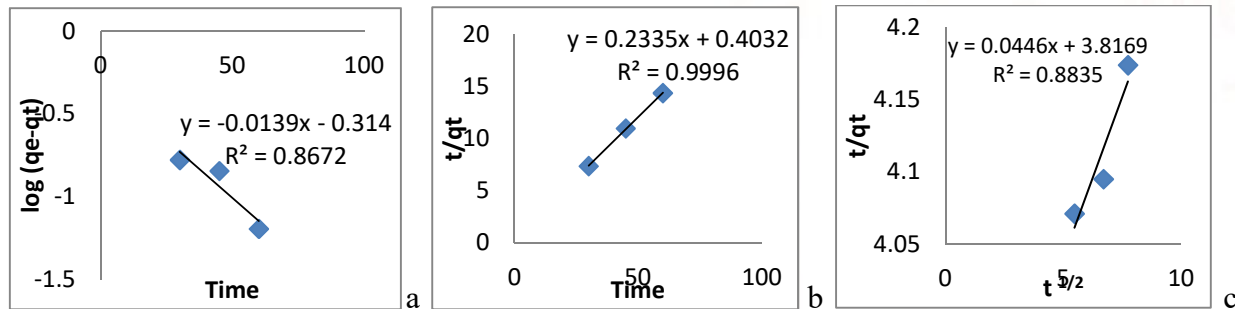


Fig. 3 (a) Pseudo first order (b) Pseudo second order (c) Intra particle diffusion kinetic models TPS CR

Table2. Characteristic parameters of the adsorption kinetic model for CR adsorbing TPS

Kinetic model	Parameter	Results
Pseudo 1st order	$K^1$ (min <sup>-1</sup> )	0.029
	$q_e$ (mg/g)	0.686
	$R^2$	0.867
Pseudo 2nd order	$h$ (mg.g <sup>-1</sup> min <sup>-1</sup> )	2.481
	$q_e$ (mg/g)	4.291
	$R^2$	0.999
Intra particle diffusion	$K_{id}$	0.053
	$C$	3.579
	$R^2$	0.937

**Thermodynamic Parameter**

The Thermodynamics parameter such as change in Gibbs’s free energy change ( $\Delta G^0$ ), enthalpy ( $\Delta H^0$ ) and entropy ( $\Delta S^0$ ) were determined using the following equation. The Gibbs free energy  $\Delta G$  equation expressed as following equation,

$$\Delta G^0 = -RT \ln K \tag{8}$$

$$\log K = \frac{\Delta S^0}{(2.303RT)} - \frac{\Delta H^0}{(2.303RT)} \tag{9}$$

Where  $K$  Equilibrium constant,  $R$  is universal gas constant (8.314 Jmol<sup>-1</sup>K<sup>-1</sup>) and  $T$  is temperature Kelvin,  $\Delta S^0$  and  $\Delta H^0$  are entropy and enthalpy respectively. The plot of  $\ln K$  versus  $1/T$  gives a linear respectively, which allows the computation of  $\Delta S^0$  and  $\Delta H^0$  values from the slope and intercept respectively.

For the negative  $\Delta G^0$  values indicates thermodynamically spontaneous nature of the adsorption. The decrease in  $\Delta G$  values with increasing temperature shows on increase in feasibility of adsorption at higher temperature. The value of  $\Delta H$

was negative indicating that the nature of the adsorption is exothermic. The negative value of  $\Delta S$  shows the decreasing randomness adsorbate solution interface during the adsorption process.

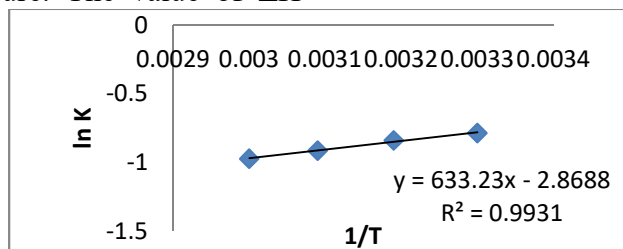


Fig. 4 Thermodynamic parameter  $1/T$  vs.  $\ln K$

Table 3. Thermodynamics parameter TPS CR

Temperature (K)	$\Delta G$ (J.mol <sup>-1</sup> )	$\Delta H$ (KJ.mol <sup>-1</sup> )	$\Delta S$ (J.mol <sup>-1</sup> .K <sup>-1</sup> )	R <sup>2</sup>
303	-1977	-12.123	-54.91	0.993
313	-2183			
323	-2451			
333	-2685			

## RESULTS AND DISCUSSION

### Adsorbent characterization

#### UV spectrum

UV visible spectrum of adsorption bond 495nm was noticed that the spectrum changes of adsorption bond may confirm the strong bond between the active group present in the inhibitor molecule and solid surface. It can be used for detect the absorbance value for the CR dye in different stages.

#### FTIR (Fourier Transform Infrared Spectroscopy)

The FTIR spectrum of TPS before and after adsorption Fig. 5 of CR dye were analyzed to determine the vibration frequency changes in their functional groups for TPS before adsorption various peaks at 500-3500cm<sup>-1</sup>, Changes in the vibration and rotational movements of the molecule detection of functional groups which have specific vibration frequency. For example, C=O, NH<sub>2</sub>, -OH etc.

Before adsorption of CR dye (3908.04cm<sup>-1</sup> and 3809cm<sup>-1</sup>) from -OH hydroxyl groups, (3319.58 cm<sup>-1</sup> and 3249.57 cm<sup>-1</sup>) N-H str from Amide groups, 3119.25 cm<sup>-1</sup> from NH<sub>3</sub><sup>+</sup> Ammonium salts of carboxylic groups, 2915.41 cm<sup>-1</sup> C-H str from Alkanes, 2849.09 cm<sup>-1</sup> C-H str from Aryl and Aldehyde groups, 1736.95 cm<sup>-1</sup> C=C str from

Alkenes, 1628.90 cm<sup>-1</sup> C=O str from Ketones, 1440.89 cm<sup>-1</sup> C-H def from Diaryl and Dialkyl Esters. 1369.98 cm<sup>-1</sup> N-O str from Nitro compounds, -C-O str Alcohols, 1240.43 cm<sup>-1</sup> C-O str from Esters and Lactones, 1150.26 cm<sup>-1</sup> S=O str from Amine sulfides or Acids, 1017.46 cm<sup>-1</sup> Salts of phosphate esters, 800.62 cm<sup>-1</sup> N-H str from salts of Hydroxyl Halides, 690.39 cm<sup>-1</sup> C-S str from Sulphonic acids, 567.95 cm<sup>-1</sup> -NO<sub>2</sub> Aryl nitro compounds.

After adsorption of CR dye it was found that most of the functional groups the adsorbent were affected after the dye uptake process. This is judged from shifts in the position of some of the functional groups that moved at lower frequency or higher frequency or band intensity before and after CR adsorption includes 2913.50 cm<sup>-1</sup> C-H str from Alkanes, 2853.56 cm<sup>-1</sup> from C-H str from Alkyl groups, 1632.37 cm<sup>-1</sup> NH<sub>3</sub>...SO<sub>3</sub><sup>-</sup> from Amino sulfonic acids groups, 1525.40 cm<sup>-1</sup> Aromatic compounds, 1015.12 cm<sup>-1</sup> C-O str Carbohydrates, 554.01 cm<sup>-1</sup> Ar-X aryl halides halogen groups respectively indicates involving of these groups for CR binding to TPS.

#### SEM (Scanning Electron Microscopy)

Fig. 6 shows that SEM image of TPS powder it can be observed from the external surface of TPS powder is

very irregular with heterogeneous ridges and pores. SEM micrographs of TPS before and after adsorption are pictured in Fig. 6 respectively. The prepared TPS presents a micro porous structure with different pore diameters. In addition the TPS surface seems to be rough and presents many protrusions before

adsorption. This adsorption the TPS morphology has changed and the surface become smoother with less visible process, indication an adsorption on both the surface and within pores.

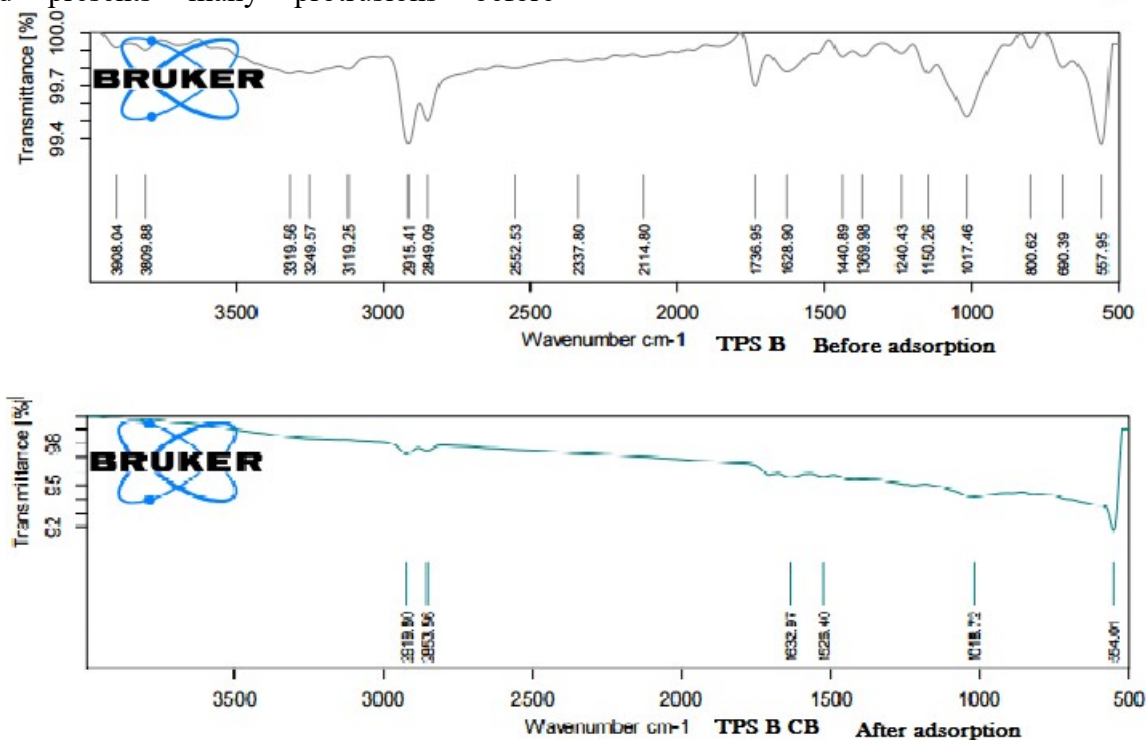


Fig. 5 FTIR Fourier Transform Infrared Spectroscopy for before and after adsorption on TPS CR

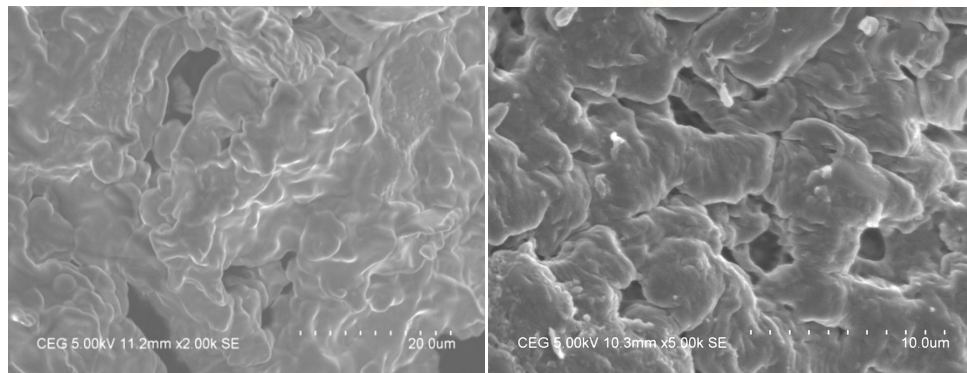


Fig. 6 SEM morphology image for TPS and TPS CR before and after adsorption

## Influence of the Adsorption study

### Effect of pH

The influence of pH on the adsorption of CR onto TPS is illustrated in Fig 7a it was observed that the percentage removal and adsorption capacity of CR by TPS decrease as pH increase from 3 to 8 optimum sorption was obtained at pH 3. The decrease in percentage removal and adsorption capacity with

increase in pH can be attributing for the adsorption sites on the adsorbent surface while the anionic groups of the CR dye for the adsorption sites on the adsorbent surface while at low pH values the negative charge (-OH) in the solution decrease and the adsorption surface is more positively charged thus enhancing attraction of the anion of the CR dye.

### Effect of adsorbent dosage

The effect of adsorbent dosage as the percentage of CR dye as shown in Fig.7b it can be observed that the

percentage of CR dye increased with increase in the adsorbent dosage. Although, the equilibrium adsorption capacity decreased with increase of adsorbent dosage. This is may be due to aggregation of the adsorption sites which limits the availability of all the active sites during adsorption process.

### Effect of Initial dye concentration

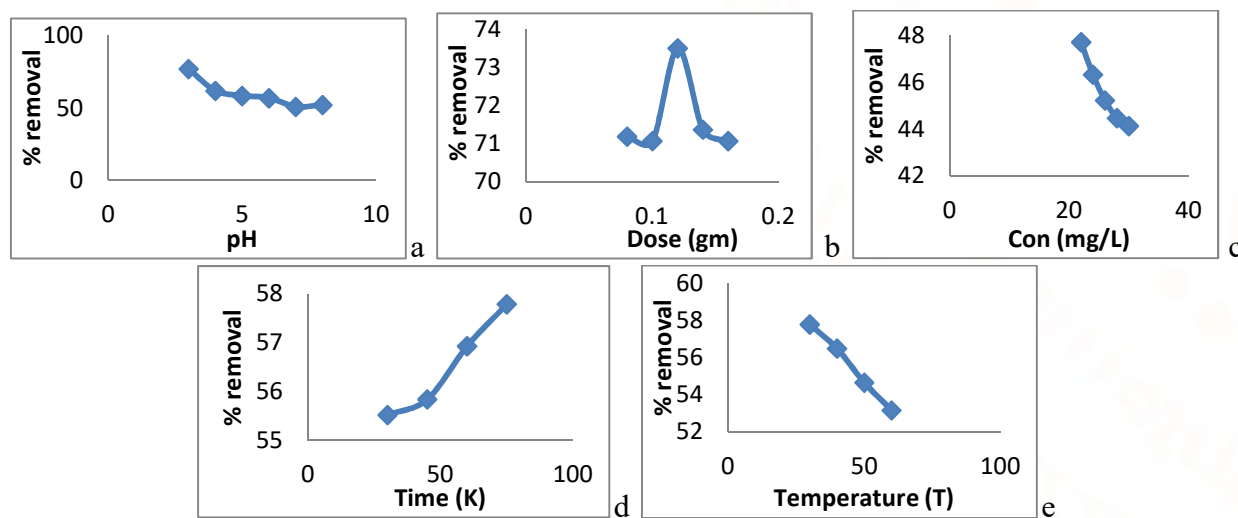
The effect of initial dye CR concentration depicted in Fig. 7c It can be observed that the percentage removal of CR dye decrease with increase in initial concentration. This is due to the fact increase in dye concentration more dye molecules are available for adsorption by the adsorbent. This is attributes to the effects of concentration gradient which is the main deriving forces for the adsorption process. As the initial concentration increase, the available site on adsorbent surface area becomes less which causing increment in dye being adsorbed. However, these removal dyes percentage decrease. Which is been proved in Fig. 7c the experimental data showed of CR adsorbed decrease in particle size of the adsorbent. This indicated that the smaller TPS particles see for a given mass of TPS the more surface area is available and as a consequence the greater number of binding sites available.

### Effect of Contact time

The effect of contact time on the removal of CR dye is depicted in Fig. 7d it can be observed that there was a rapid removal in the first 30 minute and it proceeds slowly until result has been reported for the adsorption of CR onto TPS powder. It can be inferred from the rapid sorption rate at the initial stage that there were great quantity of active site on the external surface of TPS which resulted in the swift CR dye removal. Once equilibrium is attained there was further increase since the remaining vacant sites are difficult to occupy probably due to the adsorbents and the bulk phase.

### Effect of Temperature

The influence of temperature of the percentage removal of CR dye TPS is illustrated in Fig. 7e it can be observed the increase in temperature resulted in decreased in percentage removal of CR by TPS. This decrease in removal efficiency with increase in temperature can be attribute to the weakening of the physical bonding between the adsorbent CR dye and the active sites of the adsorbent (TPS). In addition the CR dye solubility also increases with increase in temperature resulting in the interaction between the solute and the solvents to be stronger than that between the solute was more different to adsorbed.



**Fig. 7 Effects of (a) pH, (b) Adsorbent dosage, (c) Initial dye concentration, (d) Contact time, (e) Temperature TPS CR**

## CONCLUSION

Dyes are generally present in the effluents of textile industries. They are distribute in soils aquatic environment and are known to be a source of environment contaminates so the necessary demands to focus the attention on technique leading to complete removal of dye molecule. The removal of

Congo red 4B from industries wastewater using biomass (TPS) has been investigated under different experimental conditions. The adsorbing of CR dye was examined at different experimental conditions. The results corrugate that adsorption increase in increase contact time, temperature, adsorbent dosage

and pH. The maximum removal of dye CR at 303K was found to be 57.73% for TPS, 75min<sup>-1</sup> was found to be 57.79%, 22mg/L was found to be 47.72%, 0.12g was found to be 73.51% and pH was found to be 77.74% at maximum percentage removal in this study. Kinetic study shows the adsorption reaction follows Pseudo second order kinetic model ( $R^2=0.999$ ). The equilibrium data were found to be well represented by Freundlich isotherm shows that the surface is heterogeneous in nature. The percent research work established that TPS was excellent low-cost bio adsorbent for the removal of dye CR. The negative values of  $\Delta G^0$  and the negative value of  $\Delta H^0$  obtained indicated the spontaneous and exothermic nature of the adsorption process while the negative  $\Delta S^0$  value obtained decreased randomness during the adsorption process. The kinetic and thermodynamic data can be Further explore for the design of an adsorbed for industrial effluents treatment.

## REFERENCES

- Arulkumar.M., Sathishkumar.P., and Palvannan. V., (2011) "Optimization of Orange G dye adsorption by activated carbon of *Thespesia populnea* pods using response surface methodology", *Journal of Hazardous Materials*, Volume 186, Issue 1, 15 February, PP.827-834.
- Vasudevan.M., Parle.M., (2006) "Pharmacological actions of *Thespesia populnea* relevant to Alzheimer's diseases", *Phytomedicine*, Volume 13, Issues 9-10, 24 November, pp.677-687.
- Vijyakumar G, Tamilarasan R and Dharmendirakumar M, *J Mater Environ Sci.*(2012), 3(1), 157-170.
- Ho Y S and McKay G, *Can J Chem Eng.*, (1998) , 76(4), 822-827: DOI:10.1002/cjce.5450760419
- Walker G M, Hansen L, Hanna J A and Allen S J, *Water Res.*, (2003), 37(9), 2081-2089; DOI:10.1016/S0043-1354(02)00540-7
- Stydini M, Dimitris I K and Verykios X E, *Appl Catal B: Environ.* (2004), 47(3), 189-201; DOI:10.1016/j.apcatb.2003.09.014
- Dogan M, Alkan M and Onganer Y, *Water Air soil Pollut.*, (2000), 120(3-4), 229-248; DOI:10.1023/A:1005297724304
- Wang, Q.; Chen, C.; Zhao, D.; Ma, W.; Zhao, J., (2008), "Change of Adsorption Modes of Dyes on Fluorinated TiO<sub>2</sub> and its Effect of Photocatalytic Degradation of Dyes under Visible Irradiation", *Langmuir*, 24: 7338-7345.
- Wang, S.; Zhu, Z. H., (2007), "Effects of acidic treatment of activated carbons on dye adsorption", *Dyes and Pigments*, 75: 306-314.
- Tahir, S. S.; Rauf, N., (2006), "Removal of cationic dye from aqueous solutions by adsorption onto bentonite clay", *Chemosphere*, 63: 1842-1848.
- Gupta, V.K.; Mittal, A.; Kurup, L.; Mittal, J., (2006), "Adsorption of a hazardous dye, erthrosine, over hen feathers", *Journal of Colloid and Interface Science*, 304: 52-57.
- Chiou, M.; C., G., (2006) "Competitive adsorption of dye metanil yellow and RB15 in acid solutions on chemically cross-linked chitosan beads", *Chemosphere*, 62: 731-740.
- Langmuir, (1916) 1 Langmuir "The constitution and fundamental properties of solids and liquid" *J. Am. Chem.SOC.*, Volume 38,1916, PP 2221-2295
- G.Limousin, J.P.Gaudet, L. Charlet, S.Szenknect, v.Barthes, M.Krimissa, "sorption isotherms: a review on physical bases, modeling and measurement", *Applied Geochemistry*, 22,(2007), 249-275.
- Theivarasu, C., and Myslamy, S. (2010), "Equilibrium and kinetic adsorption studies of Rhodamine B from aqueous solution using cocoa (*Theobroma cacao*) shell as new adsorbent". *International Journal of Engineering, Science and Technology*, 2(1): 6284-6292.
- Dang, V. B. H., Doan, H.D., Dang-Vu, T., and Lohi, A. (2009), "Equilibrium and kinetics of biosorption of cadmium (II) and copper (II) ions by wheat straw". *Bioresource Technology* 100:211-219.
- Aksu, Z. and Yener, J. (2001), "A comparative adsorption/biosorption study of mono-chlorinated phenols onto various sorbents". *Waste Management*, 21: 695-702.